

M



Christina Vergano *Voices Carry*, 2009. Oil on wood, 30 x 30 inches. Courtesy: Woodward Gallery, New York.

in the art world

thenewyorkartworld.com

January 2010



ARTIST | DAVID STOLTZ | WALKIE TALKIE, 1982

SAGAMORE

THE ART HOTEL



1671 COLLINS AVENUE SOUTH BEACH
SOCIAL MIAMI RESERVATIONS 786 594 3344
SAGAMOREHOTEL.COM 305 535 8088

The Catalina

HOTEL & BEACH CLUB

SOUTH BEACH

1732 COLLINS AVENUE SOUTH BEACH, FLORIDA 33139 catalinahotel.com 305.674.1160

ANOTHER LIEBERMAN PRODUCTION
southbeachgroup.com

WHITELAW CHELSEA CHESTERFIELD MERCURY SHELLEY LILY-LEON



ARTIST | DAVID STOLTZ | WALKIE TALKIE, 1982



Iris Schieferstein, German Autumn, Digital Print 2009

BREAKTHROUGH

Reflections on the Berlin Wall

BERTOLD BARASCH
MICHEL HAESE
HEIDE HATRY
LAURA HATRY
PAUL KAESTNER
RICHARD RABENSAAT
HENRY RASMUSSEN
IRIS SCHIEFERSTEIN

Through 23 January 2010

SAGAMORE

THE ART HOTEL



1671 COLLINS AVENUE SOUTH BEACH
SOCIAL MIAMI RESERVATIONS 786 594 3344
SAGAMOREHOTEL.COM 305 535 8088

HP GARCIA GALLERY

580 Eighth Avenue @ 38th Street NYC 212 354 7333 hpgarciagallery.com

Izumi Kaoru, Sakai Maki wears Jil Sander (2002), 2008. C-print, 70.9 x 59 inches




NEW LOCATION
520 WEST 23RD STREET
GROUND FLOOR
NEW YORK, NY 10011



bronze series

black & white series

petrified wood series

 B r e v a r d s

2320 North Miami Ave
Miami FL 33127

305.576.5747
Brevards.com

AMERICAN INTERNATIONAL FINE ART FAIR

Rated ★★★★★ by *The Art Newspaper*



FRANK HORVAT - COURTESY HOLDEN LUNTZ GALLERY

Prestigious international exhibitors and the
Palm Beach cultural community
welcome you to a festive, enhanced 2010 edition
of the American International Fine Art Fair
in America's most glamorous winter destination.

Palm Beach | Feb 3-8

Preview Evening February 2

Palm Beach County Convention Center

239 495 7293 | www.aifaf.com | info@aifaf.com

MIA

WWW.MIA-ARTFAIR.COM

7-10 JANUARY 2010 • PREVIEW 6 JAN
MIAMI BEACH CONVENTION CENTER

75 MODERN + CONTEMPORARY ART + INTERNATIONAL GALLERIES

JOSÉ BEDIA: A RETROSPECTIVE • INSTALLATION BY FEDERICO URIBE

“FOCUS ARGENTINA” PAVILION OF 20 LEADING GALLERIES

MIA ART CRUSH WEEKEND GALLERY WALKS • BRICKELL / LITTLE HAVANA

CORAL GABLES • WYNWOOD • DESIGN DISTRICT

ORGANIZED BY IFAE • TEL +1 239 498 1683 • INFO@IFAE.COM

Something
new to get excited about.

SF Fine Art Fair

MODERN & CONTEMPORARY ART

MAY 21-23, 2010

FESTIVAL PAVILION, FORT MASON CENTER, SAN FRANCISCO

www.SFFineArtFair.com

... It's more than just art.

ArtHamptons
THE INTERNATIONAL FINE ART FAIR | 1900-PRESENT
JULY 9-11, 2010
www.ArtHamptons.com

Media Sponsor:
M
in the art world - themag.com

ArtAspen
THE FINE ART FAIR | 1900-PRESENT
AUGUST 6-8, 2010
www.Art-Aspen.com

Space is limited, contact 631-283-5505 rick@hamptonsexpo.com



15-19 JAN 2010
art palmbeach
ART + PHOTOGRAPHY + DESIGN

15-19 January 2010
(JAN 14 PREVIEW)

**PALM BEACH COUNTY
CONVENTION CENTER**

WEST PALM BEACH, FLORIDA USA

www.artpalmbeach.com
t: 239 495 9834

Courtesy Verve Gallery,
Ft. Lauderdale, FL USA
Tom Wesselmann, *Still Life w/Liz 1989*



A Stylish Gateway to the Lower East Side

151 East Houston Street, Lower East Side, NY tel 212-777-0012 www.hoteleasthouston.com

M

EDITORIAL

- 12 **Cristina Vergano**
at Woodward Gallery, New York
By M. Brendon MacInnis
- 20 **Miami: Art Basel Week 2009**
A Photo Reportage
By M. Brendon MacInnis
- 32 **Gregory Jacobson**
at Zg Gallery, Chicago
By Lynda Wellhausen

LISTINGS

- 35 New York City
53 Chicago
55 Los Angeles
57 San Francisco
59 Miami
61 Shanghai
61 Beijing

BASICS

- 10 News
63 Openings
61 Auctions
64 Index

MAPS

- 34 Village • LES
36 Soho • Tribeca
40 Chelsea
46 Midtown • 57th Street
48 Uptown
50 Brooklyn • Williamsburg
51 Queens • LIC
52 Chicago
54 Los Angeles
56 San Francisco
58 Miami • Wynwood
60 Shanghai
62 Beijing

Everything is going to be okay. And then it won't be. And then it will be again. And then your idea of okay will change. And then it'll change again. Nothing is permanent—nothing at all. And that's okay.

This synoptic pronouncement, attributed to Jaime-Leigh Fairbrother, makes an appropriate preamble to a new year at the precipice of a new decade. Looking back at the first decade of the new millennium, many things that seemed okay then are not okay today. Case in point: The most egregious abuses of a profit-driven health insurance industry in the US that kills the sick and bankrupts their families is finally being addressed through reform legislation that's likely to become law.

And in the auto industry, the tyranny of the *Big Three* makers of gas guzzling clunkers that stood in the way of the electric car for nearly a century finally collapsed. Now you can see the emergence of stylish electric car makers, like Tesla Motors in California, making cars for tomorrow, employing people today.

Then there is the geo-political progress around the globe. We take for granted that there is no "Berlin Wall", and that's how it should be. People travel much more easily today, and ideas travel more easily too, across the web. Of course bad ideas travel too; the shoe bomber has given way to the guy with a bomb in his underpants, etc. Snake oil has been replaced by financial derivatives, and nobody really knows what a dollar is worth anymore, or what's worth a dollar.

But people still want things to be okay. This is a time for *the art of the possible*. And that's okay.

M

thenewyorkartworld.com

Vol. 13, No. 5, January, 2010
ISSN 1534-5394

Publisher/ M. Brendon MacInnis • Director/ Kristin Reger
Promotions/ Tam Vo • Executive Editor/ M. Brendon MacInnis
• Contributing Writers/ Mary Hrbacek/ Lynda Wellhausen/
Joel Simpson/ Nicolette Ramirez/ Natane Takeda/ Joyce
Korotkin • Photo Editor/ Joel Simpson • Architecture Editor/
Guy Rezaciner • Circulations Manager/ Steven Rodriguez
• Web Design/ Lan Xu • Web Master/ Orin Buck • Copyeditor/
Intern/ Claudia Eve Beauchesne

Asia Bureau • Editor/ Vivi Ying He
MBM Publications, Room 104, building 2, 91 Tai An Rd Shanghai
200052 China. Tel /CH 86.13761300987 /HK 852.95357978
email/ vivi@thenewyorkartworld.com
thenewyorkartworld.com

M is published monthly by MBM Publications. All requests for permission and reprints must be made in writing to:
MBM Publications 303 West 42nd Street, fifth floor
New York, NY 10036. Tel 212.956.0614
editor@thenewyorkartworld.com
Printed in China

BILBAO ARTE NEW YORK

December 15, 2009 - February 9, 2010

 **The
Gabarron
Foundation**
Carriage House Center for the Arts
149 East 38 Street New York
www.gabarronfoundation.org

News

New Member

Brevards Gallery has joined the Member Listings guide of M. (see Miami Listings).

ABBA Fine Art has joined the Member Listings guide of M. (see Miami Listings).

Messineo Art Projects has joined the Member Listings guide of M. (see Chelsea Listings).

Wyman Contemporary has joined the Member Listings guide of M. (see Chelsea Listings).

New Director

The Museum of Contemporary Art in Los Angeles has appointed New York art dealer Jeffrey Deitch, who holds an M.B.A. from Harvard University, as its new Director.

The Cooper-Hewitt National Design Museum in New York has appointed Bill Moggridge, an industrial designer credited with designing the prototype for the first laptop computer, as its new Director.

Art Fair

Miami International Art Fair debuts January 7 -10, with a VIP Preview Reception Wednesday, January 6, at the Miami Beach Convention Center. For more information please visit: www.mia-artfair.com

Art Palm Beach the South Florida art event that features three distinct and complimentary art fairs in one location takes place January 15 - 19 with a VIP Preview Reception January 14. For more information please visit: www.artpalmbeach.com

Winter Antiques Fair takes place January 22 - 31 with a VIP Preview Reception January 21, at the Park Avenue Armory, New York. For more information please visit: www.winterantiquesshow.com

L.A. Art Show takes place January 20-24 (new dates) at the Los Angeles Convention Center, with an Opening Night benefit on Wednesday, January 20. For more information please visit: www.laartshow.com

Photo LA The 19th Annual International Los Angeles Photographic Art Exposition takes place at 1855 Main Street, Santa Monica CA, January 14-17. For more information please visit: www.photola.com



BRUNCH LUNCH DINNER
OPEN EVERY DAY 11 AM - 11 PM

112 SUFFOLK ST, NEW YORK NY, 10002 PHONE: 212 533 6088

“Italy never got rid of the classical balance that came from Roman art; it’s still there now, and I think I took in some of it”

Cristina Vergano
Woodward Gallery

By **M. Brendon MacInnis**

Cristina Vergano studied at the International School of Milan, the Liceo Classico and the University of Genoa, majoring in art history, before moving to New York in the 1980s. Her paintings often draw on myth and magic, featuring hybrid figures that are half human, half animal. In this show, called “Just for You”, she takes these themes into a contemporary setting, offering a nod to surrealism, but with her own twist. The show also includes, for the first time, her sculptural pisces. We spoke with the artist about her work at the Woodward Gallery in New York, earlier this month.

You had a show at this gallery a couple years ago. How did you start working together? I met Kristine and John Woodward as early as 1997 or 1998. I had my first show at their gallery when they were in Soho in 1998. We had met by chance; I was painting in some artist owned studios and we were having open

studios. Christine visited the studios. Their dog lead them there, to my studio; it was a Sharpei, who has since gone on to a better life. We immediately liked each other and they offered me an exhibition at their gallery. I’ve had shows every two or three years since. This is my seventh or eight show with them. It’s a wonderful relationship. They are old-fashioned dealers, they take a personal interest in the artists. They’re not just about business; they don’t throw tantrums, they’re lovely people.

They don’t throw tantrums; ok, I can see you have experience in the art world. I notice the themes in your work are unusual, how does your background play into this? I’m from Italy. I grew up there and came to the US in my early twenties; all of my education took place in Italy. I absorbed a lot of classical art and always visited museums, churches and cathe-



Cristina Vergano *Demoiselles*, 2009. Oil on wood. 72 x 60 inches.
Courtesy: Woodward Gallery, New York



Cristina Vergano *Amina*, 2008. Oil on wood. 72 x 30 inches.
 Courtesy: Woodward Gallery, New York

drals. That had an imprint upon me. Italy never got rid of the classical balance that came from Roman art; it's still there now, and I think I took in some of it.

Did you study in Italy? Yes at the University of Genova.

Looking at your work, it's hard to define it. On one level it's sexy and provocative, but on another it's absurd while technically refined with a lot of classical influences. Where did develop this style? Do you derive this from fairy tales or folklore? My mind is like a compost heap. I've been throwing things in it ever since I was tiny. I've always been very visual. Some of my earliest memories, from two years old or earlier, are very visual; they are opinions about visual things. I kept feeding and throwing things in. Still every day I file images. Traveling in Italy also did a lot; in Italy, France, Germany, Greece — seeing art of the past. Also in Mexico, lots of anonymous artists, almost folk art, is absolutely wonderful. Also magazine ads, candy wrapping, everything feeds it, and somehow things come out.

Do you mix in mythology from stories you've read? Yes! I took much art history and read much about it, so that is probably the base from which I take off. I also come from a family of artists, painters, and I so absorbed visual things from them. My grandfather was a known writer and painter in Italy in the seventies and sixties, he was my model, my idol. I remember being so tiny I could barely reach the table where he painted; I remember seeing oil colors and I was thinking, God, if only I could paint like that when I'm older.

Do you remember when you started painting? When did you find out that you really liked doing this? I've always known it; my first oil painting I did when I was three! It was very abstract! [laughs]. I always knew. It was never really a choice to paint. It's the

only thing that I can do well, that I love to do, that talks to other people. I always felt that, I always had feedback.

When you're two or three years old, everything is possible. Was there music in your house? I mean, were there other influences in art? Absolutely zero music education, which is sad; I wish we had had it. Completely nothing. It was visual.

Did you read a lot of stories? Did you read fairy tales? I never really connected with them so much. I think my present work connects to them through myth and also magic realism, but no fairy tales. I always read very adult books.

What do you think of Goya in this regard? Was his work an influence? I love Goya; I love Goya! Of course. Big influence. I love his looseness, in a way he was very unhinged. For his time, he was crazy. He did things that were really off the charts; he was really free.

In those times, artists usually made a living doing commission paintings... He did commissions too, in his own way, kind of rigid. He doesn't seem to aim at flattering so much; often the people look very harsh.

Is your recent work connected to any sort of social or political statement? I find that works of art that try to follow an ideological line generally lose something. I do address human issues, for example there is a vein of feminism, but even that is muted, it's subtle, it's not hard core. I tend to deal with and portray underdogs. I think all of us feel like that at times. So it's something all of us can identify with, the human condition.

Is there an example of an underdog portrayal in this show? Well, any hybrid creature is an outsider; they're freaks. There are several here [in this show].



Cristina Vergano *Lahila*, 2008. Oil on wood. 72 x 30 inches.
 Courtesy: Woodward Gallery, New York



Cristina Vergano *Fatma*, 2008. Oil on wood. 72 x 30 inches.
 Courtesy: Woodward Gallery, New York

You mean like the piece that has a woman with a bird's head? Where does that come from? The hybrids come from mythology, magic realism, surrealism. Every myth has hybrid animals, classical myth, but also Aztec, Mayan, Norse.

There's sculpture in the show too. I didn't know you worked in sculpture. The sculptor pieces are assembled from different ceramic and porcelain pieces that I buy at flea markets. I cut off parts, I sand them, I build up parts and assemble them differently. It looks effortless but it takes lots of thinking and also work.

It doesn't look effortless. Oh good!

So you take found pieces and you modify them? Correct. And I assemble different parts and entirely paint certain parts and varnish them, it takes forever but it's an inordinate amount of fun.

This one with hands for heads throws you off a bit; it's very surreal. It took me about a week, eight hours a day. They're very unexpected. Here's a monkey girl, her name is Molly. She's also made from found objects.

Is it relatively new for you to work in sculpture? Fairly new. I worked on *Molly* for several years. The rest are from just this past year.

The idea to incorporate text in the paintings, is this something new in this show? No, I'd been putting letters or text in my paintings for many years. This show is more pop. I've never used talk balloons before though. It's fun, there's an alluded quality to them.

And why is the text reading backwards? I did that because I don't want the text to take over, it's the first thing anybody sees. They read that [the words] and it colors everything. I want it to register, but as text, as

"I find that works of art that try to follow an ideological line generally lose something. I do address human issues, for example there is a vein of feminism, but even that is muted, it's subtle, it's not hard core"



Cristina Vergano *Alain and Alphonse*, 2009. Mixed media and porcelain. 4 .25 x 2 .25 x 3 .75 inches.
 Courtesy: Woodward Gallery, New York

something, and then if people want, it's fairly easy to figure it out.

You also have a motif of flying saucers. What's the story with that? On a shallow level, I remember old adventure books for kids' science fiction, comics, things like that. Then, on a symbolic level they're an open, powerful symbol, they represent everybody's wants and fears and desires. I was talking with a teacher recently who said she showed these paintings to her class and one girl saw in the flying saucers how men hover over women, which I had never thought about, but it's perfectly fine with me that she saw that. It's great.

Here we have a skull, or... An alien, it's a happy cartoony alien. It opens [lifts off skull top]. It has eyeballs inside and a rose — a thought.

The teeth look convincing, they're not real are they? No, this is a medical grade model. I wouldn't play like this with somebody's remains. It wouldn't be right to me. Over here [returning to the paintings], these are portraits of two of Picasso's women. This is Olga, his first wife. And this is a portrait that Picasso made of Olga's successor, his next lover. He ultimately left Olga. This is also one of his poems [in the painting].

I like this one, with the frame tilted. It's so unpredictable; there are fish in place of where you'd expect to see mountains or a landscape, I like the absurdity of it. The whole thing works. Thank you. It joins renaissance style with surrealism. It's the most overtly surreal painting here. The others have other influences. This one is about words passing by and about us grabbing them or not.

Why did you choose goldfish? I like them in the shape of a school, passing by, superimposed. They also represent time passing us by.

And the hands coming out of the ears, juxtaposing the sense of touch with the sense of hearing... It speaks of her serenity. She's also making a meditation pose in her own hands. The frame is trompe l'oeil, it's painted onto the canvas. This is a take on the painting, *Demoiselles d'Avignon*.

Is this one of Picasso's lovers? It's nobody but it looks like a young Jaqueline, Picasso's last wife. I don't use models for faces, they're idealized faces. They are serene, but there is also a dark side. The animal heads are animal natures, which can be dark or not. Many people fear them. This one has an ancient dog head. These are masks, one is actually a photo of one of

the masks Picasso used in a painting.

These paintings over here go in a different direction, there are African and Middle Eastern sensibilities. They were painted together, they're more graphic; they refer to old ethnographic photos.

I notice that these are the only paintings in the show that are not hybrids; on the surface they appear as conventional portraits. The women wear Islamic veils but they're sexy. What's that in the background? That is the gate of mecca. These women are underdogs, like the hybrids are in the other paintings. This rock [in the foreground] represents that she could have been stoned just for looking sexy.

Are you trying to do something provocative? Yeah, sure, why not? If any cause deserves it, this one does. Almost every day young women are stoned to death, for nothing, for being raped.

The faces in these paintings have such distinct characteristics, beyond a generic reference. Are these specific people?

No, no I don't use models. They are all idealized. I had my male assistant pose for the hands and for the positions somewhat, but I only took those parts for making the

composition and then I eventually changed them.

Ethnically, how would you describe them? Sort of generic classical faces but vaguely middle eastern, Mediterranean, they could be anything; this one girl is African. This one is my personal favorite, it's titled *The Seven Tyrannies*. There are tyrannies in each panel; there is the tyranny of the unexpected, the tyranny of boredom, the tyranny of sex, of love, of looks...

How does the fish [in the painting] represent sex? In Mediterranean culture, it's often used as a symbol of sex, meaning the male member. I thought it's understandable even to another viewership, in the sense that it's animal, it's slimy. In this panel [the tyranny of love] she's holding a heart, a real heart. She speaks from Virgil, "Each is drawn by their own desires"

Is there anything else you want to say about the work in general? Just that I had an inordinate amount of fun painting it and I think it's very vital work. I'm very happy with it. **M**

Ed. Note:
The Woodward Gallery is one of the first New York galleries to move to the Lower East Side (LES). Please see Village LES Listings for address and hours.



Cristina Vergano (opposite page and above), discusses her show at the Woodward Gallery, New York. Photo © MacInnis, 2009

“The intellectual center of the art world may be in New York; we come to Miami during Art Basel Week to feel its pulse”

Miami: Art Basel Week 2009

A Photo Reportage

By **M. Brendon MacInnis**

Named for the Swiss mega-fair that internationalized the once parochial art scene in Miami by launching its sister art fair in 2002, *Art Basel Miami Beach*, “Art Basel Week” has evolved to mean much more than an art fair. Today this term designates a city-wide global festival of the arts that encompasses Miami Beach, Midtown Miami, Wynwood and Miami’s Design District. Though routinely characterized in press accounts as an annual event consisting of some 20 + art fairs, Art Basel Week is not so much about the number of “art fairs” taking place; most of these are cookie-cutter affairs that pop up around the main attractions to make a fast buck. Rather, this week is really about Miami coming of age as an urban art destination, one that boasts the lure of the sun and the beach in the dead of winter. To be sure, it’s also about art — the people who collect art and the people who make art, and everyone in between. The intellectual center of the art world may be in New York; we come to Miami during Art Basel Week to feel its pulse.

The good news is there’s no really bad news. Okay, there were fewer parties this time around; prices have come down somewhat from the bubble



induced stratosphere of yesteryear (with some exceptions), but the patient survived. Indeed, New York/Miami based Tony Goldman, head and heart of the socially responsible developer firm, Goldman Properties (responsible for Soho as we knew it and Wynwood as we're getting to know it) announced the launch of a Graffiti Art Museum in Wynwood, together with New York dealer Jeffrey Deitch. Mr. Goldman's son, Joey Goldman, opened an art friendly Italian restaurant called *Joey's* in Wynwood; and the South Florida power duo, David and Lee Ann Lester, are launching another major art fair in Miami slated to debut in January. Life goes on, recession or no.

Also in Wynwood, artist/dealer John Brevard opened his large ground floor space focusing on sculpture, *Brevards Gallery*, while Harold Golen opened his new *Harold Golen Gallery*, and the immutable *Galerie Emmanuel Perrotin* threw a party during Art Basel Week that seemed to reset the calendar to 2006. In Miami Beach the Bass Museum and the Wolfsonian Museum held lavish parties as well.

Among the established satellite booth art fairs there have been significant venue changes. *NADA* left the Ice Palace in Midtown Miami for a move to North Miami Beach; Helen Allen's *Pulse* moved into *NADA's* old venue (Ice Palace) and *Scope* moved into *Pulse's* old venue. In this regard it's difficult to compare the development of these fairs from the previous year, since the distinct nature of each venue was so closely associated each fair's identity. For example, when you think of *NADA*, you think of the Ice Palace with its oasis-like green lawn strewn with hammocks and children playing while people looked at art. Hard to know what to think now; that's not to say good or bad, but place matters. *Aqua Art* gave up its Miami Beach hotel venue, while keeping its booth fair in Wynwood. *Red Dot*, which launched its first booth fair in Wynwood 2008, pressed on in 2009 without director Ilana Vardy. Then there was the disastrous *Bridge Art Fair* 2008 that changed its name to *Verge* in 2009 in an apparent attempt to escape fraud charges; but it's still the same Michael Workman.



Design Miami, in its temporary structure in the Design District, at NE 39th Street & 1st Court was a pleasant surprise. In this case, moving out of the Art Deco Moore Building (where the fair was started) actually set it free develop its own identity. **M**

Ed. Note:

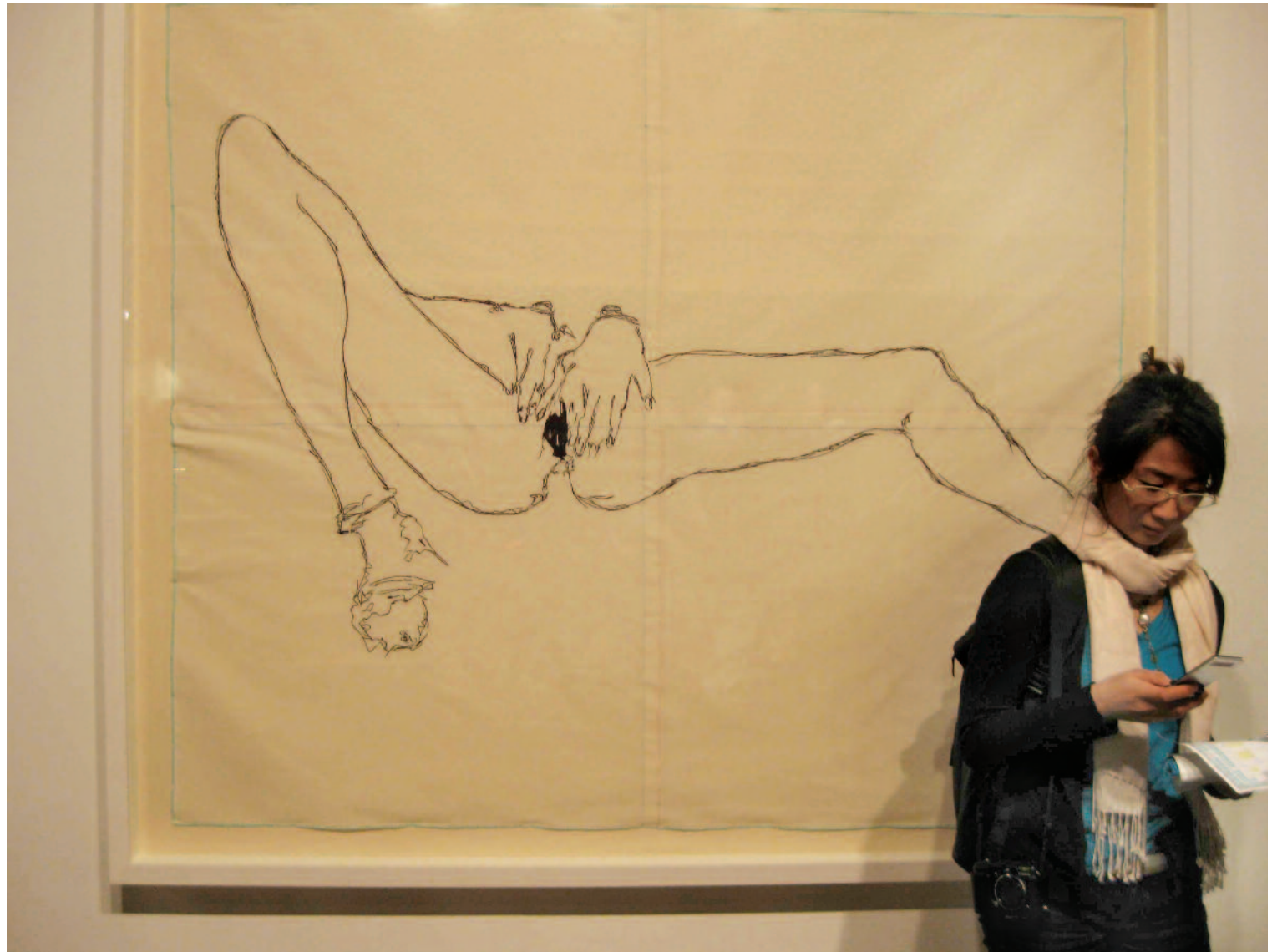
All photos on pages 20 through 31 © MacInnis, 2009. Captions: *Art Basel* Co-Directors Marc Spiegler and Annette Schönholzer at the VIP Preview of *Art Basel Miami Beach* 2009 (page 20, 21).

The VIP Lounge of *Art Basel Miami Beach* (page 21, 22); a visitor looks at art work at *Art Basel Miami Beach* (page 22, 23); graffiti and party goers at an art reception in Wynwood (top and bottom, page 24).

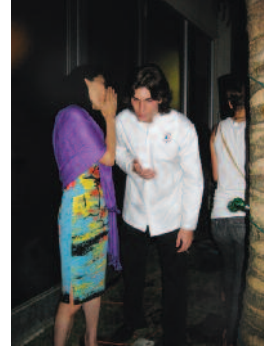
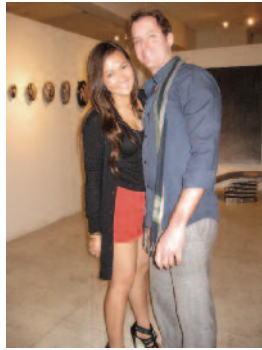
Michael Briggs, Director of Patrick Painter Editions at his booth at *Art Basel Miami Beach* (top left page 25); Wynwood graffiti / *Art Asia* art fair / *Design Miami* / *NADA* / street scenes in Wynwood (from top page 25).

Gana Art in *Art Asia* art fair / *Art Basel Miami Beach* visitors / UBS Managing Director Mark Arena at *Art Basel Miami Beach* VIP Preview / John Brevards at *Brevards Gallery* in Wynwood / Harry Golen at his new gallery in Wynwood / Galerie Emmanuel Perrotin *Art Basel* Week party in Wynwood / Stephen Cohen at *Photo Miami* / Grolsch PR girls at *Art Miami* / Pierogi 2000 owner Joe Amrhein at *Pierogi & Hales* exhibition space in Wynwood / restaurant owner "KP" at the Lost and Found Saloon in Miami's Design District / Galerie Emmanuel Perrotin *Art Basel* Week party in Wynwood / *Art Basel Miami Beach* opening night (page 28).

Majestic Properties realtor and Latin Film Fest Chicago organizer Pamela H Diaz-DeLeon and Seneca Hotel & Belden Stratford Hotel Senior Sales Executive Michael A. Foster at *Art Basel Miami Beach* / publisher M. Brendon MacInnis and Hakgojae Gallery President & *Kiaf* VP Woo Chankyu at *Art Asia* art fair / *M Asia* Review editor Vivi Ying He and *M* magazine director Kristin Reger at *Art Miami* art fair / Exhibitors at *Art Whino* art show in Wynwood / Opening night at *Art Whino* art show in Wynwood (page 29); street corner graffiti in Wynwood (page 30, 31).









“Confronted by this cacophony of objects the viewer must consider the ambiguity of these piles, which recall the remains of gluttony depicted in seventeenth century Dutch still life painting”

Gregory Jacobsen

Zg Gallery, Chicago

By **Lynda Wellhausen**

A pile of dirt haunts Gregory Jacobsen, the artist who’s work is on display at Zg gallery, Chicago, this month (see Chicago Listings). The pile wrecked havoc while covered in a tarp and some tires before the show. “I knew that it was dangerous and bad, but it was also just a part of my home-town.” Jacobsen talks about the absurd nature of this pile, decorated with tires like some kind of playground or gigantic birthday cake — an image that lurks beneath the surface in this new series of paintings.



Gregory Jacobsen *Yellow Pile*, 2009. Oil on panel, 24 x 24 inches. Courtesy: Zg Gallery, Chicago

Even if the image isn’t apparent, it’s there among the pieces of rotting fruit, animal innards and raw meat depicted in his paintings. Just like the pile in his home town, Jacobsen’s work is inviting to look at with its lush colors, and hyper-real details, but unsettling; there is the sense of something dangerous lurking just below the surface.

Jacobsen’s earlier work depicted figures caught in personal, masturbatory rituals — but in this series he has dispatched with such figures. This new work is laden with densely detailed towers of beautifully rendered rotting decay. Confronted by this cacophony of objects the viewer must consider the ambiguity of these piles, which recall the remains of gluttony depicted in seventeenth century Dutch still life painting.

Full of dualities, much like his work, Jacobsen is not easy to characterize. “I’m working with my limitations. I’m not an academically technical painter, but I’m not an intuitive painter either.” Yet his technical proficiency is clear in the sheen of an intestine that looks like it would be wet to touch, in part because of his recent switch to oil paint. “Acrylic just looked like layer upon layer.”

Unlike the threatening chaos found in that haunting pile of home-town debris, the refined precision evidenced in this work, in all of its colorful and gory detail, suggests that Jacobsen has found his higher calling after all. **M**



Gregory Jacobsen *Autumn Piñata*, 2009. Oil on wood. 36 x 24 inches. Courtesy: Zg Gallery, Chicago



Village/ LES

BLT Gallery

Herb Brown: "The Party", Paintings, video, Jan 28 thru Apr 1
 270 Bowery, 2nd floor, 10002
 212.226.6106 info@billyleethompson.com
 www.billyleethompson.com Thu-Sun 12-6

Umbrella Arts - Bodell Fahey

"Holga Inspire", photography, Dec 9 thru Jan 16; Tammy Cromer-Campbell: "Holga Workshop", photography, Jan 23
 317 E 9, fifth floor, 10003
 212.505.7196 info@umbrellaarts.com
 www.umbrellaarts.com Thu-Sat 1-6; by appt

China Square

Alex Guofeng Cao: "Recent Work", photography; At Los Angeles Art Show Jan 20 thru Jan 24
 102 Allen St, 10002
 212-255-8886 info@chinasquareny.com
 www.chinasquareny.com Tue-Sat 12-6; Thu 12-8

CSV

Multi-cultural arts center, ongoing events and shows
 107 Suffolk St, 10002
 212.260.4080 apagan@csvcenter.com
 www.csvcenter.com

Lehmann Maupin

Space closed for the month of January. Please call gallery for more information.
 201 Chrystie Street, 10002
 212 254 0054 info@lehmannmaupin.com
 www.lehmannmaupin.com Tue-Sat 10-6

The New Museum of Contemporary Art

Urs Fischer: "Urs Fischer: Marguerite de Ponty", sculpture, installation, thru Feb 7; Nikhil Chopra: "Nikhil Chopra", performance, thru Feb 7
 235 Bowery, 10002
 212-219-1222 info@newmuseum.org
 newmuseum.org Wed-Sun 12-6; Fri-Sat 7-9

NY Studio Gallery

Al Wadzinski: "The Greatest Show on Earth", sculpture, Dec 17 thru Feb 6
 154 Stanton St, 10002
 212.627.3276 info@nystudiogallery.com
 www.nystudiogallery.com Thu-Sat 12-6; or by appt.

The Pen and Brush, Inc.

Dedicated to women in the visual, literary and performing arts since 1894
 16 E. 10th St., 10003
 212.475.3669 info@penandbrush.org
 www.penandbrush.org Thu-Fri 4-7; Sat & Sun 1-5

The Phactory llc

Antonio Ferrera, artist-in-residence thru Jan 30; please call gallery to view collection
 618 E 9th (btw Av's B & C), 10009
 212.777.7922 phactory@imac.com
 www.thepactory.com Appointment Only

Feature Inc

(Building new gallery space at this address, opening soon)
 131 Allen St, 10009
 212.675.7772 featureinc@featureinc.com
 www.featureinc.com

BODELL FAHEY UMBRELLA ARTS

WWW.UMBRELLAARTS.COM

Holga Inspire

December 9 - January 16, 2010
 International exhibit of ten Holga photographers



Photo: White House, © David Burnett

Holga Workshop

Saturday January 16, 2010
 with Tammy Cromer-Campbell
Register with us online

A Different Light:

Infrared Photography
 January 28 - February 27, 2010
 Theresa Airey, Sue Ruddick Bloom,
 Jill Enfield, Elizabeth Opalenik

Infrared Photo Workshop

Saturday January 30, 2010
 with Jill Enfield and Theresa Airey
Register with us online

Outsider Art Fair

February 5-7, 2010
 7 West 34th Street, NYC
 Margaret Bodell Booth #35

317 East 9th Street
 (between 1st and 2nd Ave)
 New York, NY 10003
 212-505-7196
 Hours: Thur-Sat 1-6pm

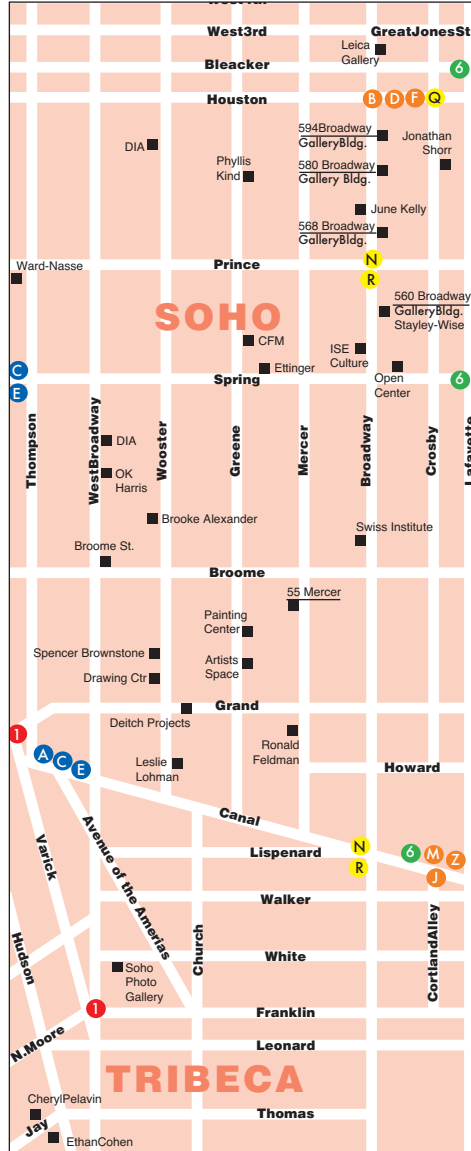
Village / LES

Woodward Gallery

Cristina Vergano: "Cristina Vergano: Just for You", painting, sculpture, thru Jan 9; Big Paper Winter, Jan 16 thru Feb 27
133 Eldridge Street, 10002
212.966.3411 art@woodwardgallery.net
www.woodwardgallery.net Tue-Sat 11-6; Sun 12-5

Zürcher Studio

Group Show: "Rue Francaise: curated by Miss China", Concept Store, Dec 12 thru Jan 3; Ester Tielemans, "Sky-line", landscapes / installation, Jan 9 thru Feb 14
33 Bleecker St, 10002
212.777.0790 studio@galeriezurcher.com
www.galeriezurcher.com Tue-Fri 10-6; Sat 12-6 Sun 2-6



Soho

Brooke Alexander

Sol LeWitt: "Wall Drawing # 481: Two Part Drawing", Multiple asymmetrical pyramids with color ink washes superimposed, installation, thru Jan 16
59 Wooster, 2nd fl, 10012
212.925.4338 info@baeditions.com
www.baeditions.com Tue-Sat 10-6

Ethan Cohen Fine Arts

Project Gallery, Group Show: "Chinese Contemporary Art Stars", thru Jan
18 Jay St, 10013
212.625.1250 info@ecfa.com
www.ecfa.com Tue-Sat 11-6

Deitch Projects

Collaborative show: Barry McGee, Todd James, Steven Powers, thru Jan, please call for more information
76 Grand and 18 Wooster, 10013
212.343.7300 info@deitch.com
www.deitch.com Tue-Sat 12-6

The Drawing Center

"Iannis Xenakis: Composer, Architect, Visionary", Jan 15 thru Apr 8; "Selections Spring 2010: Sea Marks", Jan 15 thru Apr 5
35 Wooster, 10013
212.219.2166 info@drawingcenter.org
www.drawingcenter.org Tue-Fri 10-6; Sat 11-6

Ronald Feldman Fine Arts

Simone Jones; Brian Kneip; Max Dean, Raffaello D'Andrea, Matt Donovan: "One Part Human", installation, sculpture, video, Jan 9 thru Feb 13
31 Mercer Street, 10013
212-226-3232 info@feldmangallery.com
www.feldmangallery.com Tue-Sat 10-6; Mon. by appt.

OK Harris Works of Art

Stephany Brody-Lederman, Stephen Fox, Francis Murphy, painting; Steven Corsano, works on paper; Raffael Lomas, sculpture, all thru Jan 9; Sook Jin Jo, Richard Bottwin, sculpture; Randy Dudley, Arthur K. Miller, painting; Gerald Feldman, photography, all Jan 16 thru Feb 20
383 West Broadway, 10012
212.431.3600
www.okharris.com Tue-Sat 10-6

Soho Photo Gallery

Marius Zgirdea, Veronica Kretschmer, Guest Exhibitor: Pamela Parlapiano, photography, Jan 5 thru Jan 30
15 White Street, 10013
212-226-8571 info@sohophoto.com
www.sohophoto.com Wed-Sun 1-6

Staley-Wise Gallery

Masters of fashion photography, Hollywood portraiture, landscapes, still lifes and nudes
560 Broadway, 3rd fl, 10012
212.966.6223 photo@staleywise.com
www.staleywise.com Tue-Sat 11-5

Ward-Nasse Gallery

Group show, art sale, please call for more information.
178 Prince, 10012
212.925.6951 markherd@wardnasse.org
www.wardnasse.org Mon-Fri 10-6

Chelsea

532 Gallery / Thomas Jaeckel

Please call gallery for schedule
532 W 25, 10011
917.701.3338 info@532gallery.com
www.532gallery.com Tue-Fri 11-6; Sat 1-5

ACA Galleries

James McGarrell: "Window Jazz Inventions", painting, Dec 10 thru Jan 30; Abstract Ensemble, Dec 10 thru Jan 30
529 W 20, 10011
212.206.8080 info@acagalleries.com
www.acagalleries.com Tue-Sat 10-6; 10:30-6

Agora Gallery

Ruth Gilmore Langs: "Ruth Gilmore Langs: Paint", painting, Nov 20 thru Mar 19; Group Show: "Interpretive Realms", painting, Jan 8 thru Jan 29; Group Show: "Labyrinth of Abstraction", painting, Jan 8 thru Jan 29; Group Show: "Enigmatic Perspectives", painting, sculpture, Jan 8 thru Jan 29
530 W 25, 10001
212.226.4151 info@agora-gallery.com
www.agora-gallery.com Tue-Sat 11-6

Barry Friedman Ltd.

Cristiano Bianchin, Yoichi Ohira, Laura de Santillana: "Venice. 3 Visions in Glass", Glass, thru Jan 16
515 W 26, 10001
212.239.8600 contact@barryfriedmanltd.com
www.barryfriedmanltd.com Tue-Sat 10-6

Blue Mountain Gallery

Victoria Salzman, "I though I was invisible...", Etchings, Jan 5 thru Jan 30
530 W 25, 4th fl, 10001
646.486.4730 info@bluemountaingallery.org
www.bluemountaingallery.org Tue-Sat 11-6

J. Cacciola Gallery

Eddie Kennedy, Ron Kingswood: "Eddie Kennedy, Ron Kingswood", painting, thru Jan 30
617 West 27th Street, 10001
212-462-4646 info@jccaciolagallery.com
www.jccaciolagallery.com Tue-Fri 11-5; or by appt.

Chambers Fine Art

"Tan Dun's Organic Music", installation, thru Jan 9
522 W. 19th, 10011
212.414.1169 info@chambersfineart.com
www.chambersfineart.com Tue-Sat 10-6

Cheim & Read

"Diane Arbus: In the Absence of Others", photography, Jan 7 thru Feb 13; "William Eggleston: 21st Century", photography, Jan 7 thru Feb 13
547 W 25, 10001
212.242.7727 gallery@cheimread.com
www.cheimread.com Tue-Sat 10-6

Chelsea Art Museum, Home of the Miotte Foundation

Michael Rees, "Social Object: Sculpture and Software", Dec 18 thru Jan 23
556 W 22, 10011
212.255.0719 contact@chelseartmuseum.org
www.chelseartmuseum.org Tue-Sat 12-6; Thu 12-8

Chelsea



511 W 20 St at the High Line

New York 10011

800 & 1500 SF • Ground Floor

Chelsea



138 W 19 St

New York 10011

1800 SF • Ground Floor

Soho



517 & 519 Broome St

New York 10013

400 & 860 SF • Ground Floor

Ground Floors & Upper Floors for Rent
Commercial & Residential

Is-Ila Realty Corp.
212.645.2355 • 203.858.0059
getrealestateny@gmail.com

Kent Henricksen

Kent Henricksen: *Wayward We Hunt*

Bass Museum of Art
October 3 to January 10, 2010

Artist Kent Henricksen's (b.1974) new works subtly bring to life his personal examinations of social science by integrating foreign ideals into proverbial western settings. One of the artist's main concerns is the eternal investigation of psychological and physical boundaries that human beings deal with in their every-day lives. He archives figures and landscapes from diverse sources in order to establish dialogues between the past and the present. Furthermore, he uses embroidery both as a means to illustrate imagined narratives and, to allow the viewers to make a simple association to the subject-matter.

This large-scale installation is comprised of wallpaper of the artist's own design which is used as a backdrop for silkscreen and embroidery on canvas works, and two "villain" sculptures in the form of sconces. Completely surrounding the viewer, the ambiance of the room exudes the idea of a disturbingly quiet and surreal fantasy world.

Kent Henricksen: Wayward We Hunt will be on view to the public at the Bass Museum of Art in the Cabinet through January 10, 2010.

Bass Museum of Art
2121 Park Avenue (in Collins Park)
Miami Beach, FL 33139
305.673.7530 | www.bassmuseum.org



Kent Henricksen *Wayward We Hunt*, 2009. Installation.
Courtesy: Kent Henricksen and John Connolly Presents, New York



Chelsea

Betty Cuninghame Gallery

Pearlstein/Held, thru Feb 13
541 W 25, 10001
212.242.2772 info@bettycuninghamegallery.com
www.bettycuninghamegallery.com Tue-Sat 10-6

Andrew Edlin Gallery

Group Show: "Out of Order", curated by Scott Hug, all media,
Dec 10 thru Jan 23
134 10th Ave, 10011
212.206.9723 ae@edlingallery.com
www.edlingallery.com Tue-Sat 11-6

First Street Gallery

70 Current and Former Members of First Street Gallery:
"Fortieth Anniversary Exhibition", paintings, prints,
sculpture, Dec 12 thru Jan 23; Suzi Evalenko: "What Mattered
Most: A Life in Art and Letters", oil paintings, drawings,
Feb 2 thru Feb 27
526 W 26, 9th fl, 10001
646.336.8053 gallery@firststreetgallery.net
www.firststreetgallery.net Tue-Sat 11-6

Gagosian West 24th Street

Philip Taaffe, "Works on Paper", Jan 16 thru Feb 20
555 W 24, 10011
212.741.1111
newyork@gagosian.com
www.gagosian.com Tue-Sat 10-6

Gana Art New York

"Charles Seliger: A Memorial Exhibition, Paintings 1943-
2008", painting, Jan 9 thru Feb 27
568 West 25th Street, 10001
212-229-5828 newyork@ganaart.com
www.ganaart.com Tue-Sat 10-6

George Billis Gallery

Group Show: Saul Federico, James Oliver and Randall
Moore, painting, Jan 5 thru Feb 6
555 W 25, 2nd fl, 10001
212.645.2621 gallery@georgebillis.com
www.georgebillis.com Tue-Sat 11-6

Gladstone Gallery

Sharon Lockhart, photography, Dec 11 thru Jan 30
515 W 24, 10011 info@gladstonegallery.com
www.gladstonegallery.com 212.206.9300

High Line Gallery

Albert, Appleby, Battin, Horwitz, Koenig, Laird & Levin
511 W 20, at the High Line 10011
212.645.2355 / 203.858.0059
getrealestateny@gmail.com Mon-Sun 10:30-6 & by app

Jenkins Johnson

Group Show: "Winter Haiku", Dec 10 thru Jan 30 (double
show; see San Francisco Listing)
521 W 26, 10001
212.629.0707 ny@jenkinsjohnsongallery.com
www.jenkinsjohnsongallery.com Tue-Sat 10-6



Hotel Chelsea

NEW YORK CITY

212-243-3700

hotelchelsea.com

Kent Gallery

Representing Dennis Adams, John Brill, Mike Cockrill, Heide
Fasnacht, Llyn Foulkes, Charles Gaines, Paul Laffoley,
Montadas, Irving Petlin, Emily Prince, Dorothea Tanning,
Kumi Yamashita
541 W 25, 2nd fl, 10001
212.627.3680 kent@kentgallery.com
www.kentgallery.com Tue-Sat 10-6

Jim Kempner Fine Art

Please call gallery for schedule
501 W 23, 10011
212.206.6872 info@jimkempnerfineart.com
www.jimkempnerfineart.com Tue-Sat 10-6

Anton Kern Gallery

Brian Calvin, drawings, Dec 10 thru Jan 16
532 W 20, 10011
212.367.9663 anton@antonkerngallery.com
www.antonkerngallery.com Tue-Sat 10-6

Kips Gallery

Alessio Delfino: "Metamorphoseis", photography, Jan 5 thru
Jan 30
511 W 25, 10001
212.624.4215 kips@kipsgallery.com
www.kipsgallery.com Tue-Sat 11-6

Lehmann Maupin Gallery

Christian Helmich, painting, Jan 14 thru Feb 20
540 W 26, 10001
212.255.2923 info@lehmannmaupin.com
www.lehmannmaupin.com Tue-Sat 10-6

Interpretive Realms

January 8 - 29, 2010

Reception: Thursday, January 14, 6-8 pm



Eva Bouzard-Hui • Aga Cella • Thomas de Marsay
Amanda Dunbar • Rania Mesikili
Brian Pier • Ron EA Powell (REAP13)

530 West 25th St. Chelsea, New York
212-226-4151 Fax: 212-966-4380
www.Agora-Gallery.com
info@Agora-Gallery.com

Agora
Gallery

Chelsea

Robert Mann Gallery

Robert Frank, thru Jan 9; "Michael Kenna, Venezia",
photography, Jan 14 thru Mar 13
210 Eleventh Avenue, 10001
212.989.7600 info@robertmann.com
www.robertmann.com By Appointment Only

Matthew Marks Gallery

Peter Fischli & David Weiss (Fischli & Weiss), mixed media,
thru Jan 16
522 W 22, 10011
212.243.0200 info@matthewmarks.com
www.matthewmarks.com Tue-Sat 11-6

Kathryn Markel Fine Arts

Julian Jackson, "Will 'O The Wisp; new paintings", Jan 7 thru Feb 6
529 W 20, 6th fl, 10011
212.366.5368 markel@markelfinearts.com
www.markelfinearts.com Tue-Fri 10-6; Sat 11-6

McKenzie Fine Art

Group Exhibition, Jan 7 thru Feb 6
511 W 25, #208, 10001
212.989.5467 info@mckenziefineart.com
www.mckenziefineart.com Tue-Fri 10-6; Sat 11-6

Messineo Art Projects

Celeste Fichter, Jim Knight, Andrea Sanders: "PERSPECTIVES",
contemporary color photography, featuring photo-based
media, chromogenic and digital prints, Dec 2 thru Jan 23
227 W 29, 4th fl., 10001
212-414-0827 memessineo@aol.com
www.messineoowym.com Wed-Sat 12-5; by appt

Metro Pictures Gallery

Robert Longo, photography, Dec 10 thru Jan 30
519 W 24, 10011
212.206.7100 gallery@metropicturesgallery.com
www.metropicturesgallery.com Tue-Sat 10-6

Robert Miller Gallery

Patti Smith and Steven Sebring, "Objects of Life", Jan 6 thru
Feb 6
524 W 26, 10001
212.366.4774 rmg@robertmillergaller.com
www.robertmillergallery.com Tue-Sat 10-6

Mixed Greens

Howard Fonda, painting, Jan 7 thru Feb 6
531 W 26, 1st fl, 10001
212-331-8888 info@mixedgreens.com
www.mixedgreens.com Mon-Fri 10-6; Saturday
11:00AM-6:00PM

The Museum at FIT

American Beauty, Nov 6 thru Apr 10
Seventh Ave at 27th, 10001
212.217.5800 info@themuseumatFIT.com
www.fitnyc.edu/museum Tue-Fri 12-8; Sat 10-5

Cynthia Reeves

Anne Lindberg & Johnny Swing, drawing, sculpture, Jan 7
thru Feb 6
535 W 24, 2nd fl, 10011
212.714.0044 info@reevescontemporary.com
www.cynthia-reeves.com Tue-Sat 10-6

Daniel Reich Gallery

Christian Holstad: "The World's Gone Beautiful", Dec 10 thru
Jan 30
537 A West 23rd Street, 10011
212 9244949 admin@danielreichgallery.com
www.danielreichgallery.com Tue-Sat 11-6

Ricco / Maresca

William Hawkins, painting, Jan 14 thru Feb 20
529 W 20, 3rd fl, 10011
212.627.4819 info@riccomaresca.com
www.riccomaresca.com Tue-Sat 11-6

Andrea Rosen

Group show, "The Perpetual Dialogue," painting,
sculpture, video, Dec 12 thru Jan 23
525 W 24, 10011
212.627.6000 l.mackall@rosengallery.com
www.andrearosengallery.com Tue-Sat 10-6

Jack Shainman Gallery

Antonio Murado, paintings, Nov 19 thru Jan 16
513 W. 20, 10011
212.645.1701 info@jackshainman.com
www.jackshainman.com Tue-Sat 10-6

Allen Sheppard Gallery

Molly Cliff Hilts: "Intersection", Dec 18 thru Jan 24
530 W 25, 10001
212.989.9919 info@allensheppardgallery.com
www.allensheppardgallery.com Tue-Sat 12-6



Alessio Delfino

metamorphoseis

Jan 5 - Jan 30, 2010

Kips Gallery

511 West 25th Street, Chelsea, New York, NY 10001 - www.kipsgallery.com

Chelsea

Soho20 Chelsea

Joyce Harris Mayer, "Selections from 1976-2009", painting, mixed media, Jan 5 thru Jan 30
547 W. 27, ste. 301, 10001
212.367.8994 info@soho20gallery.com
www.soho20gallery.com Tue-Sat 12-6

Robert Steele Gallery

Michelle Dennis, painting, Jan 13 thru Feb 13
511 W. 25 St. suite 101, 10011
212.243.0165 info@robertsteelegallery.com
www.robertsteelegallery.com Tue-Sat 11-6

Stendhal Gallery

Paula Scher, prints thru Feb
545 W. 20th St., 10011
212.366.1549 info@stendhalgallery.com
www.stendhalgallery.com Tue-Sat 11-6

Stricoff Fine Art Ltd.

Group show from the collection including sculpture by Emma Rodgers, painting, sculpture, thru Feb 28
564 W. 25, 10001
212.219.3977 info@stricoff.com
www.stricoff.com Tue-Sat 11-6

Studio 601

Works by Paul Kolker
511 West 25th Street, 10001
212.367.7300 elaine@paulkolker.com
www.paulkolker.com Mon-Sat 10-6

Stefan Stux Gallery

Anna Jóelsdóttir: "Priest Chews Velvet Haddock", painting, installation, thru Jan 9; Group Show, "The Rise and Fall of Excess Culture", all media, Jan 14 thru Feb 6
530 W 25, 10001
212.352.1600 stux@stuxgallery.com
www.stuxgallery.com Tue-Sat 10-6

Von Lintel Gallery

Antonio Murado, paintings, Nov 19 thru Jan 16
520 W 23, Ground fl, 10011
212.242.0599 gallery@vonlintel.com
www.vonlintel.com Tue-Sat 10-6

Mike Weiss Gallery

Maya Gold, "Wake", painting, thru Jan 9; Stefanie Gutheil, painting, Jan 14 thru Feb 20
520 W 24, 10011
212.691.6899 info@mikeweissgallery.com
www.mikeweissgallery.com Tue-Sat 10-6

Wyman Contemporary

Celeste Fichter, Jim Knight, Andrea Sanders: "PERSPECTIVES", contemporary color photography, featuring photo-based media, chromogenic and digital prints, Dec 2 thru Jan 23
227 W 29, 4th fl., 10001
212-414-0827 memessineo@aol.com
www.messineowyman.com Wed-Sat 12-5; by appt

Andre Zarre Gallery

Bruce Checefsky: "Curiouser and Curiouser.", chromogenic digital scanner prints, Jan 5 thru Jan 30; "Harald Marinius: Recent sculpture and paintings", Jan 5 thru Jan 30
529 West 20th Street, 10011
212.255.0202 andrezarregallery.com Tue-Sat 11:30-6:30

Midtown

Asia Society

"Yoshihiro Suda: In Focus", thru Feb 7; "Devotion in South India: "Chola Bronzes", thru Feb 7
725 Park Ave at 70th, 10021
212.288.6400 info@asiasociety.org
www.asiasociety.org Tue-Sun 11-6; Fri 11-9

DC Moore Gallery

Jacob Lawrence, Jack Levine, Jan 6 thru Feb 6
724 Fifth Ave at 57th, 8th fl, 10019
212.247.2111 info@dcmooregallery.com
www.dcmooregallery.com Tue-Sat 10-5:30

Forum Gallery

Peter Krausz: "[No] Man's Land", thru Jan 16; Bernardo Siciliano, painting, Jan 21 thru Mar 13
745 Fifth Ave, at 57th, 4th & 5th fl, 10151
212.355.4545 gallery@forumgallery.com
www.forumgallery.com Mon-Fri 10-5:30

Fountain Gallery

"ASYLUM: Artists from the Living Museum", curated by Janos Marton and Alexandra Plettenberg, Jan 14 thru Feb 24
702 Ninth Ave, 10019
212.262.2756 jason@fountaingallery.com
www.fountaingallerynyc.com Tue-Sat 11-7; Sun 1-5

Galerie St. Etienne

Celebrating the 70th Anniversary of Galerie St. Etienne: "Egon Schiele As Printmaker", paintings, drawings, prints, thru Jan 23
24 W 57, 8th fl, 10019
212.245.6734 gallery@gseart.com
www.gseart.com Tue-Fri 11-5

Gallery Korea

"Faces and Facts: Korean Contemporary Art in New York", Nov 19 thru Feb 19
460 Park Ave, 6th fl, 10022
212.759.9550 info@koreanculture.org
www.koreanculture.org Mon-Fri 10-7; Sat 10-4

The Gabarron Foundation, Carriage House Center for the Arts

Group show: "BILBAO ARTE NEW YORKen", painting, photo, installation, Dec 15 thru Feb 9
149 E 38, 10016
212.573.6968 x10 info@gabarron.org
www.gabarronfoundation.org By appointment only

HP Garcia Gallery

BREAKTHROUGH: Reflections on the Berlin Wall, a powerful and visually stimulating exhibition commemorating the 20th anniversary of the fall of the Berlin wall in 1989. BREAKTHROUGH communicates the personal reflections of the participating artists on the realities of life around the Berlin Wall, its consequences in the lives and psyche of the German people as well as the events that finally brought it down. Participating artists include: Bertold Barasch, Michel Haese, Heide Hatry, Laura Hatry, Paul Kaestner, Richard Rabensaat, Henry Rasmussen and Iris Schieferstein, Nov 3 thru Jan 23
580 Eighth Avenue, 7th Floor, 10018
212.354.7333 info@hpgarciagallery.com
www.hpgarciagallery.com Tue-Sat 1-6



Demetrio Alfonso, *What Is Gold*, 2009, 32.5" x 32.5" (detail)

anekalixas dirstineallery -lenettoalfonso vera arubunyan joanna hao elvira baohi rohani halley john weerunga baroo regina hammliner xavier barthe kara beer maybauer martinberstein kiratibruiner joe banno fraulill beattobaxrel -lanielecazabur patibocavetes robki collins veronika constantine elitana cro-nis shmore collars edo-oro jak-dikokerau -lan cambell monika -leao alessandra -leolaro dake-doreek opal -lunbar nily enst gillan frazier karen freeman joyceforrier -lal hiel mara o garola gazala staron yonon am haesael halsapial patter hiebtrom med leu hennan-lez -lana hiebon melilko hiebtro pat hiebes junk nalya jluual remi joann-lek alexandra kavak nilla keeol kely helz -lavh j labeta kluga kokuszek frank koripatrio laren jeonika leuan jim livety hedy malman ardita margou aledia maguire-oriz marja mo-artly -labonfo sohyamlyz dirstmorb robert mortou dleu murray praxiteharaki mark newton john neman pebra nintz osama okitaban oonor d-louudi soija obon marlan oster allen palmer laurel pararania nancy panther edu palazolo joe palemo -lanitupre pao lu sheng play paula polill gay plimney martin porry barbara rosho tanyu rayr aill rao an-lrelobakov mark-rohinez paxal-roo oille-rozaeek pat roux alexandra rozeiman malabo-arakl vltou edimilt lab solonkar joan solre-ler Loebang dirstel eolke julio sarrasa lau joay elin galid edimiltner rhouz solonvald lu amlln lll storonak kuno suzuki kaed hikamura mteak berzan jak-leltianlere -lmonle remi horeean jebeyan-ler lenle barbara yeloran lavraivo von hion rabi vteozorek lra wehikatt raly west -lanis wool

GROW EXHIBIT CONNECT

CONTEMPORARY ART NETWORK



580 8th AVENUE NYC 10018 212 354 2999 INFO@CAN.NYC.COM CAN.NYC.COM

Midtown

Howard Greenberg Gallery

Homer Page, photography Jan 8 thru Feb 20 (Keith Davis, curator at the Nelson-Atkins museum, lectures on Jan 7, see openings)

41 E 57, 14th fl, 10022
212.334.0010 info@howardgreenberg.com
www.howardgreenberg.com Tue-Sat 10-6

Nohra Haime Gallery

Pier Alli and Favi, Dec 9 thru Jan 16; Lina Leal, Dec 9th thru Jan 16

41 E 57, 6th fl, 10022
212.888.3550 info@nohrahaim.com
www.artnet.com Mon-Sat 10-6

Bill Hodges Gallery

Norman Lewis: "Black on White", drawings, thru Jan 2; Group show to follow, please call gallery for schedule
24 W 57, 10019

212.333.2640 info@billhodgesgallery.com
www.billhodgesgallery.com Tue-Fri 10:30-6; Sat 12:30-5:30

Leonard Hutton Galleries

Post War American, Russian Avant-Garde, German Expressionism, European Modernism, Painting / Sculpture / Works On Paper

41 E 57, 6rd fl, 10022
212.751.7373 gallery@leonardhuttongalleries.com
www.leonardhuttongalleries.com Mon-Fri 10-5:30



International Center of Photography

Group Show: "Dress Codes: The Third ICP Triennial of Photography and Video", photography, thru Jan 17
1133 Avenue of the Americas at 43rd Street, 10036
212-857-0000 info@icp.org
www.icp.org Tue-Sat 10-6; until 8pm Fri

Jadite Galleries

Ellen Fisch: "Harlem", Photography, Jan 5 thru Jan 30;
Cepp Selgas: "The 13th Sign", Painting, Jan 5 thru Jan 30;
Richard Taddei & Giorgio Casu: "Paintings", Painting, Jan 13 thru Jan 30
413 W 50, 10019
212.315.2740 jaditeart@aol.com
www.jadite.com Tue-Sat 12-6

Marlborough Gallery

Group show, thru Feb, please call gallery for schedule
40 W 57, 2nd fl, 10019
212.397.0317 info@marlboroughgallery.com
www.marlboroughgallery.com Mon-Sat 10-5:30

The Museum of Modern Art (MoMA)

"Monet's Water Lilies" thru Apr 12; "In Situ: Architecture and Landscape" thru Jan 18; "The Erotic Object: Surrealist Sculpture from the Collection", thru Jan 4; Paul Sietsema, thru Feb 15; "New Photography 2009", thru Jan 11; "Projects 91: Artur Zmijewski", thru Feb 1; Tim Burton, Nov 22 thru Apr 26; Gabriel Orozco, Dec 13 thru Mar 1; "Bauhaus Workshops/ Lounge", Nov 9 thru Jan 25
11 W 53, 10019

212.708.9400 info@moma.org
www.moma.org Sat-Mon, Wed-Thu 10:30-5:30; Fri 10:30-8

New Art Center

Group exhibition of artists members of CAN - Contemporary Art Network, Jan 5 thru Jan 23
580 8th Avenue @ 38th Street, 10018
212.354.2999 info@newartcenter.net
www.newartcenter.net Tue-Sat 1-6

Michael Rosenfeld Gallery

"Charles Seliger: A Memorial Exhibition, Paintings 1943-2008", painting, Jan 9 thru Feb 27
24 W 57, 7th fl, 10019
212.247.0082 info@michaelrosenfeldart.com
www.michaelrosenfeldart.com Tue-Sat 10-6

Throckmorton Fine Art, Inc.

Tina Modotti, "Tina Under the Mexican Sky," photography, Dec 17 thru Mar 6
145 E 57, 3rd, 10022
212.223.1059 kraige@throckmorton-nyc.com
www.throckmorton-nyc.com Tue-Sat 10-6

Zabriskie Gallery

Yasuo Kuniyoshi, painting / drawing, thru Jan 9; Man Ray, Jan 12 thru Mar 18
41 E 57, 4th fl, 10022
212.752.1223 info@zabriskiegallery.com
www.zabriskiegallery.com Tue-Sat 10-5:

PAUL POLLARO



Axial Fleur de Lis, 2009, mixed media on wood, 22.5" x 16"

represented by

HP GARCIA GALLERY

580 Eighth Avenue NYC 10018 212 354 7333 hpgarciagallery.com

Uptown

Americas Society

Fernell Franco: "Amarrados" [Bound], photography, thru Jan 23
680 Park Ave at 68, 10065
212.249.8950 culture@americas-society.org
www.as-coa.org Wed-Sat 12-6

Nathan A. Bernstein & Co., Ltd.

Impressionist, Modern, Contemporary Fine Art
21 East 65th Street, 2nd Floor, 10065
212.288.8970 info@nathanbernsteinart.com
www.nathanbernsteinart.com
Mon-Fri 10-6; Sat. by appt.

Björn Ressle Gallery

Please call to see the collection
16 E 79, 2nd fl, 10021
212.744.2266 mail@ressleart.com
www.ressleart.com Tue-Fri 10:30-6; Sat 10:30-5:30

China Institute

Artwork from the Shang (16th - 11th c.) through Qing (1644-1911) dynasties: "Confucius: His Life and Legacy in Art", paintings, bronzes, jades, and sculptures, Feb 11 thru Jun 13
125 E 65th St, 10065
212.744.8181 info@chinainstitute.org
www.chinainstitute.org Sun-Sat 10-5; Tue & Thu 5-8

Dickinson Roundell Inc.

Old Masters, Impressionist, Modern and Post-War Art from the gallery's inventory. Viewings by appointment.
19 E 66, 10021
212.772.8083 hugo@simondickinson.com
www.simondickinson.com by appt

The Frick Collection

"Watteau to Degas: French Drawings from the Frits Lugt Collection", thru Jan 10; Exuberant Grotesques: Renaissance Maiolica from the Fontana Workshop, thru Jan 17
1 E 70, 10021
212.288.0700 info@frick.org
www.frick.org Tue-Sat 10-6; Sun 11-5

Gagosian Madison Avenue

Elisa Sighecci, "The Party is Over", photography, Jan 14 thru Mar 6
980 Madison at 76, 10021
212.744.2313 newyork@gagosian.com
www.gagosian.com Tue-Sat 10-6

Gemini G.E.L. at Joni Moisant Weyl

"All Wrapped Up For The Holidays", Affordable gifts by gallery artists, Dec 16 thru Jan 16; Richard Tuttle: "Metal Shoes", Eight New Etchings, Jan 20 thru Feb 27 [see LA listings]
980 Madison at 76th, 5th fl, 10021
212.249.3324 info@joniweyl.com
www.joniweyl.com Tue-Sat 10-6

Goedhuis Contemporary

You Si, painting, thru Jan 8
42 E 76, 10021
212.535.6954 newyork@goedhuiscontemporary.com
www.goedhuiscontemporary.com Mon-Sat 10-6



Uptown

Richard Gray Gallery

Contemporary and modern masters
1018 Madison Ave, 10021
212.472.8787 info@richardgraygallery.com
www.richardgraygallery.com Tue-Sat 10-5:30

Guggenheim Museum

Kandinsky, thru Jan 13; "Anish Kapoor: Memory", thru Mar 28; Thannhauser Collection and Kandinsky Gallery, ongoing
1071 Fifth Ave at 89th, 10128
212.423.3500 visitorinfo@guggenheim.org
www.guggenheim.org Sat-Wed 10-5:45; Fri 10-8

LTMH

Installations by gallery artists, Jan 7 thru Jan 30
39 East 78th Street at Madison Avenue, 10075
212-249-7695 ltmh@ltmhgallery.com
www.ltmhgallery.com Tue-Sat 11-6

Hirschl & Adler

"Modeling Grace: Two Centuries of American Sculpture", thru Feb 6
21 E 70, 10021
212.535.8810 gallery@hirschlandadler.com
www.hirschlandadler.com Tue-Fri 9:30-5:15; Sat 9:30-4:45

Irena Hochman Fine Art Ltd

Emin, Grotjahn, Hirst, Judd, Katz, Maloney, Myslowski, Picasso, Ryman, Warhol
1100 Madison Avenue, 10028
212.772.2227 info@artincontext.com
www.artincontext.com Tue-Sat 10-6

The Jewish Museum

"Reinventing Ritual: Contemporary Art and Design for Jewish Life", thru Feb 7; "Rite Now: Sacred and Secular in Video", thru Feb 7; "Culture and Continuity: The Jewish Journey", ongoing
1109 Fifth Ave at 92nd, 10028
212.423.3200 info@thejm.org
www.thejewishmuseum.org
Sun, Mon, Wed, Thu 11-5:45, Tue 11-8

Jo-An Fine Art Gallery

20th Century Paintings and Fine Art Prints by Old and New Masters, Theresa Bernstein, Frank Mason, Terence Cottle, Anthony Palumbo and others
247 E 77, 10021
212.717.9111 joanpictur@aol.com
www.jo-an.com Tue-Sat 10-5:30

Knoedler & Co.

Group show, mixed media, thru Feb 13
19 E 70, 10021
212.794.0550 info@knoedlergallery.com
www.knoedlergallery.com Tue-Fri 9:30-5:30; Sat 10-5:30

Hans P. Kraus, Jr. Fine Photographs

Exhibiting at the Winter Antiques Show Jan 22 thru Jan 31; open by appointment only in Jan
962 Park Avenue, 10028
212-794-2064 info@sunpictures.com
www.sunpictures.com appt only

Lincoln Center Gallery

"Lincoln Center: Celebrating 50 Years", Oenslager Gallery, Varied Media / Ephemera, thru Jan 6; "List Art Collection", ongoing
136 W 65, 10023
212.875.5017 webmaster@lincolncenter.org
www.lincolncenter.org During showtimes, By appt.

Metropolitan Museum of Art

"American Stories: Paintings of Everyday Life, 1765-1915", thru Jan 24; "Art of the Smurai: Japanese Arms and Armor, 1156-1868", thru Jan 10; "Looking In: Robert Frank's The Americans", thru Jan 3
Fifth Ave at 82nd, 10028
212.879.5500 www.metmuseum.org
Tue-Thu & Sun 9:30-5:30; Fri-Sat 9:30-9:00

Galerie Mourlot

"Modern Masters", prints, ongoing
16 E 79, 10021
212.288.8808 ny@galeriemourlot.com
www.galeriemourlot.com Mon-Sat 10-6

El Museo Del Barrio

"Nexus New York: Latin/American Artists in the Modern Metropolis" thru Feb 28
1230 Fifth Ave at 104th, 10029
212.831.7272 tours@elmuseo.org
www.elmuseo.org Wed-Sun 11-5

The National Academy Museum

Gallery closed the month of Jan; Hosting New York Ceramics Fair, Jan 20 thru Jan 24, opening preview Jan 19, tickets required (see openings)
1083 Fifth Avenue, @ 89th Street, 10128
212.369.4880 press@nationalacademy.org
www.nationalacademy.org Wed-Thu 12-5; Fri-Sun 11-6

Neue Galerie New York

"From Klimt to Klee: Masterworks from the Serge Sabarsky Collection", thru Feb 15
1048 Fifth Ave, 10028
212.288.0665 museum@neuegalerie.org
www.neuegalerie.org Thu, Sat-Mon 11-6; Fri 11-9

Michelle Rosenfeld

Modern and contemporary masters, sculptures, paintings and works on paper, ongoing
16 E 79 at Madison, 10021
212.734.0900 info@michaelrosenfeldart.com
www.michaelrosenfeldart.com Mon-Fri 10-5

Anita Shapolsky Gallery

Group Show: "Potpourri", painting, sculpture, thru Jan 16
152 E 65 (patio entrance), 10021
212.452.1094 ashapolsky@nyc.rr.com
www.anitashapolskygallery.com Wed-Sat 11-6

Allan Stone

Group Show, "Bay Area to New York", abstract expressionist artists from the Bay Area, extended thru Jan
113 E 90, 10128
212.987.4997 info@allanstonegallery.com
www.allanstonegallery.com

Uptown

Paul Thiebaut Gallery

Open by appt only; please call San Francisco gallery
42 East 76th St. (at Madison), 10021
212.737.9759 info@paulthiebautgallery.com
www.paulthiebautgallery.com By appt only thru Jan

Erik Thomsen LLC Asian Art

Japanese screens, paintings and works of art
44 E 74, 2nd Fl, 10021
212.288.2588 info@erikthomsen.com
www.erikthomsen.com Mon-Fri 2-6; Sat 10-2

Ubu

"Modern Collage, Victorian Engravings & Nostalgia", thru Jan 30
416 E 59, 10022
212.753.4444 info@ubugallery.com
www.ubugallery.com By Appointment only

Whitney Museum of American Art

"Georgia O'Keeffe: Abstraction" January 17; A Few Frames:
Photography and the Contact Sheet", thru January 3, 2010
945 Madison Ave at 75th, 10021
212.570.3676 info@whitney.org
www.whitney.org Wed, Thu, Sat, Sun 11-6, Fri 1-9

Wildenstein & Co. Inc.

Representing some of America's foremost living artists as
well as the estates of major figures of modern art.
19 E 64, 10021
212.879.0500 info@wildenstein.com
www.wildenstein.com Mon-Sat 10-5



Brooklyn / Williamsburg

Art 101, Inc.

Chester Nielsen: "California Houses", drawings and paintings, Jan 22 thru Feb 2
101 Grand Street, 11211
718.302.2242 info@art101brooklyn.com
www.art101brooklyn.com Fri-Sun 1-6

Brooklyn Museum of Art

"Reflections on the Electric Mirror: New Feminist Video",
thru Jan 10; Patricia Conin, "Harriet Hosmer, Lost
and Found", thru Jan 24; "From the Village to Vogue:
The Modernist Jewelry of Art Smith", thru Feb 21
200 Eastern Parkway, 11238
718.638.5000 information@brooklynmuseum.org
www.brooklynmuseum.org Wed-Sun 10-5; Sat-Sun 11-6

Causey Contemporary

K X 2, "VECTOR I Vector", sculptural painting, Dec 10
thru Jan 30
293 Grand St, 11211
718.218.8939 info@chiccontemporaryfineart.com
www.causeycontemporary.com Wed-Sun 11-7, Mon 9-5

Front Room Gallery

Please call gallery for schedule
147 Roebling Street, 11211
718.782.2556 info@frontroom.org
www.frontroom.org Fri-Sun 1-6; by appt

Kentler International Drawing Space

Artists working on site-specific works for month of Jan, by
appt only, reopens Feb with regular hours, please
check website
353 Van Brunt St, 11231
718.875.2098 info@kentlergallery.org
www.kentlergallery.org by appt only thru Jan

Parker's Box

Group show, video art, please call gallery for details
193 Grand Street, 11211
718.388.2882 info@parkersbox.com
www.parkersbox.com Fri-Mon 1-7

Pierogi

Gallery 1, Tony Fitzpatrick, "Drawing for Crazy Horse",
Gallery 2, Chain Hok Hooi, "You are Carnivores"
177 N 9th St
718.599.2144 info@pierogi2000.com
www.pierogi2000.com Thu-Mon 12-6

The Boiler

Doug Henderson, "Music for 100 Carpenters", extended thru
Jan 6; Film nights throughout Jan, please call for schedule;
Following exhibition opens Feb 12 7-9
191 N 14th St, 11211
718.599.2144 info@pierogi2000.com
www.pierogi2000.com Thu-Mon 12-6

Williamsburg Art & Historical Center (WAH)

11th annual WAH salon, Jan 16 thru Feb 14
35 Broadway, 11211
718.486.6012 wahcenter@earthlink.net
www.wahcenter.net Sat-Sun 12-6

JUVENAL REIS STUDIOS

A COMMUNITY OF INTERNATIONAL, PROFESSIONAL AND EMERGING ARTISTS

43-01 22ND STREET, LONG ISLAND CITY, NY 11101. (JUST BLOCKS FROM P.S.1)

Take E/V train to 23rd/Ely Ave. - 7 train to 45th RD/Court House Sq. - N train to Queensboro Plaza

Visit our site to contact over 130 artists

If you need a studio to work ... give us a call

web : JuvenalReisStudios.com | e-mail : studios@JuvenalReisStudios.com | phone : 718-570-3663

LIC / Queens

climate / gallery

International and national 100+ artists: "Focal Resolution-1",
Photography, digital video, Jan 9 thru Jan 24
37-24 24th suite 406, 11101
718-7842737 info@climategallery.com
www.climategallery.com Fri-Sun 12-6

Dean Project

Sangbin Im, Palma Blank-Rosenblum and Kris Tamburello:
"Parallel States", Dec 12 thru Feb 14
4543 21 St, LIC 11101
718.706.1462 info@deanproject.com
www.deanproject.com Thu-Sun 12-6; Mon by appt.

Deitch Projects

Keith Haring: "The Ten Commandments", thru Feb 15
4-40 44th Drive, Long Island City 11101
212.343.7300 info@deitch.com
www.deitch.com Thu-Sun 2-8

Juvenal Reis Studios

A community of international, professional and
emerging artists
43-01 22nd St., 11101
718.875.2098 studios@juvenalreisstudios.com
www.juvenalreisstudios.com Mon-Fri 9-5

M55 Art

Enid Sanford: "Enid Sanford New Paintings", Painting, Jan 7
thru Jan 24
44-02 23rd Street, ground floor, 11101
718.729.2988 eddo52@verizon.net
www.55mercergallery.com Thu-Sun 12-6

P.S.1 Contemporary Art Center

Robert Bergman: "Selected Portraits", photography, thru Jan
4; "Between Spaces", junior curatorial staff show, thru Apr 5;
"1969", Work from the collection produced in '69, thru Apr 5
22-25 Jackson Ave, LIC 11101
718.784.2084 mail@ps1.org
www.ps1.org Thu-Mon 12-6

QCC Art Gallery

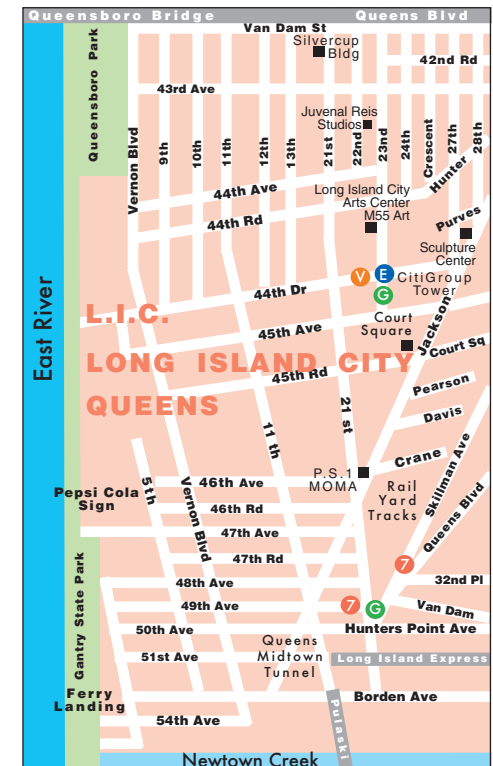
Quintana Martello: "Memoria"; Permanent Collection
of African Art; Marlene Tseng Yu: "March of the Icebergs";
Judith Ziechner, all thru Feb
222-05, 56th Ave, 11364
718.631.6396 QCCArtGallery@qcc.cuny.edu
www.qccartgallery.org Tue-Fri 10-5; Sat-Sun 12-5

Socrates Sculpture Park

"Emerging Artist Fellowship Exhibition", thru March 8;
"Open Space: Pentti Monkkonen, Temple of Dionysos";
"Broadway Billboard: Stephen Shore, Amarillo, Texas, July, 1972"
Broadway @ Vernon Blvd, LIC 11106
718.956.1819 info@socratessculpturepark.org
www.socratessculpturepark.org Daily 10-

The Space L.I.C.

Group Show, Jan 9 thru Feb 3
25-17 41st Ave, LIC 11101
718.752.0331 info@licspace.org
www.licspace.org Wed & Fri 12-9; Thu & Sat 12-6





National - Chicago

Museum of Contemporary Art Chicago

"Alexander Calder in Focus", sculpture, thru Feb 14
 220 E Chicago Av, 60611
 312.397.4095
www.mcachicago.org

Roy Boyd

Brigitte Riesebrodt: Metamorphoses, thru Jan 5; John Fraser, "Object Lesson: Continuation + New Combinations", Jan 8 thru Mar 2
 739 N Wells St, 60654
 312.642.1606 info@royboydgallery.com
www.royboydgallery.com Tue-Sat 10-5:30

Dubhe Carreño

Anne Drew Potter, "Le Cirque de L'Armée Rouge", sculpture, Jan 8 thru Mar 5
 118 N Peoria St, 2nd Fl, 60607
 312.666.3150 info@dubhecarrenogallery.com
www.dubhecarrenogallery.com Tue-Sat 10:30-5:30

Melane Cooper

"Rima Yang: Yin & Yang", Jan 15 thru Feb 26
 740 N Franklin St, 60654
 312.202.9305 mcoopergallery@aol.com
www.melaneecoopergallery.com Tue-Sat 11-5

Richard Gray

Jim Dine: "Old Me, Now: Self Portrait Drawings 2008-2009", thru Jan 16
 875 N Michigan Av, Ste 2503, (John Hancock Bldg) 10014
 312.642.8877 info@richardgraygallery.com
www.richardgraygallery.com Mon-Fri 10-4:30

Carl Hammer

"Wilson Snowflake Bentley: 1866-1931", Snowcrystals in vintage photomicrographs, Dec 4 thru Jan 30
 740 N Wells St, 60654
 312.266.8512 hammergeall@aol.com
www.hammergeall.com Tue-Fri 11-6; Sa 11-5

Richard Norton

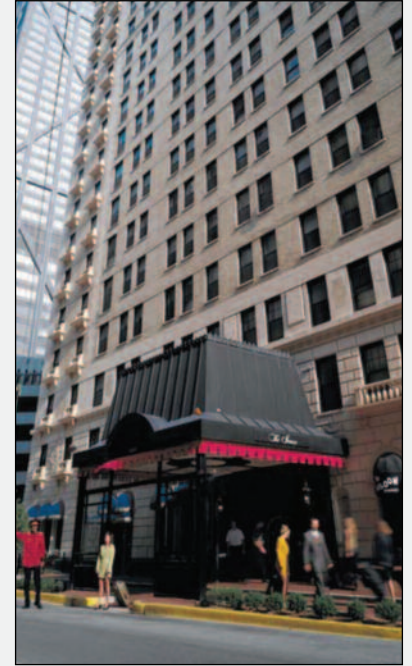
Specializing in Impressionist and Modern paintings, drawings, and sculpture from the late nineteenth and early twentieth centuries
 612 Merchandise Mart, 60654
 312.644.8855 info@richardnortongallery.com
www.richardnortongallery.com Mon-Fri 9-5

Carrie Secrist

Douglas C. Bloom: "New Painting", thru Jan 9; Liliana Porter, video, prints thru Jan 9; Dietrich Wegner, photography, Jan 15 thru Mar 13
 835 W Washington Blvd, 60607
 312.491.0917 info@secristgallery.com
www.secristgallery.com Tue-Fri 11-6

Zg Gallery

Gregory Jacobsen, "Prostrate: New Paintings and Works on Paper", Jan 8 thru Feb 20
 300 W Superior St, lower level, 60654
 312.654.9900 info@zggallery.com
www.zggallery.com Tue-Sat 10-5:30

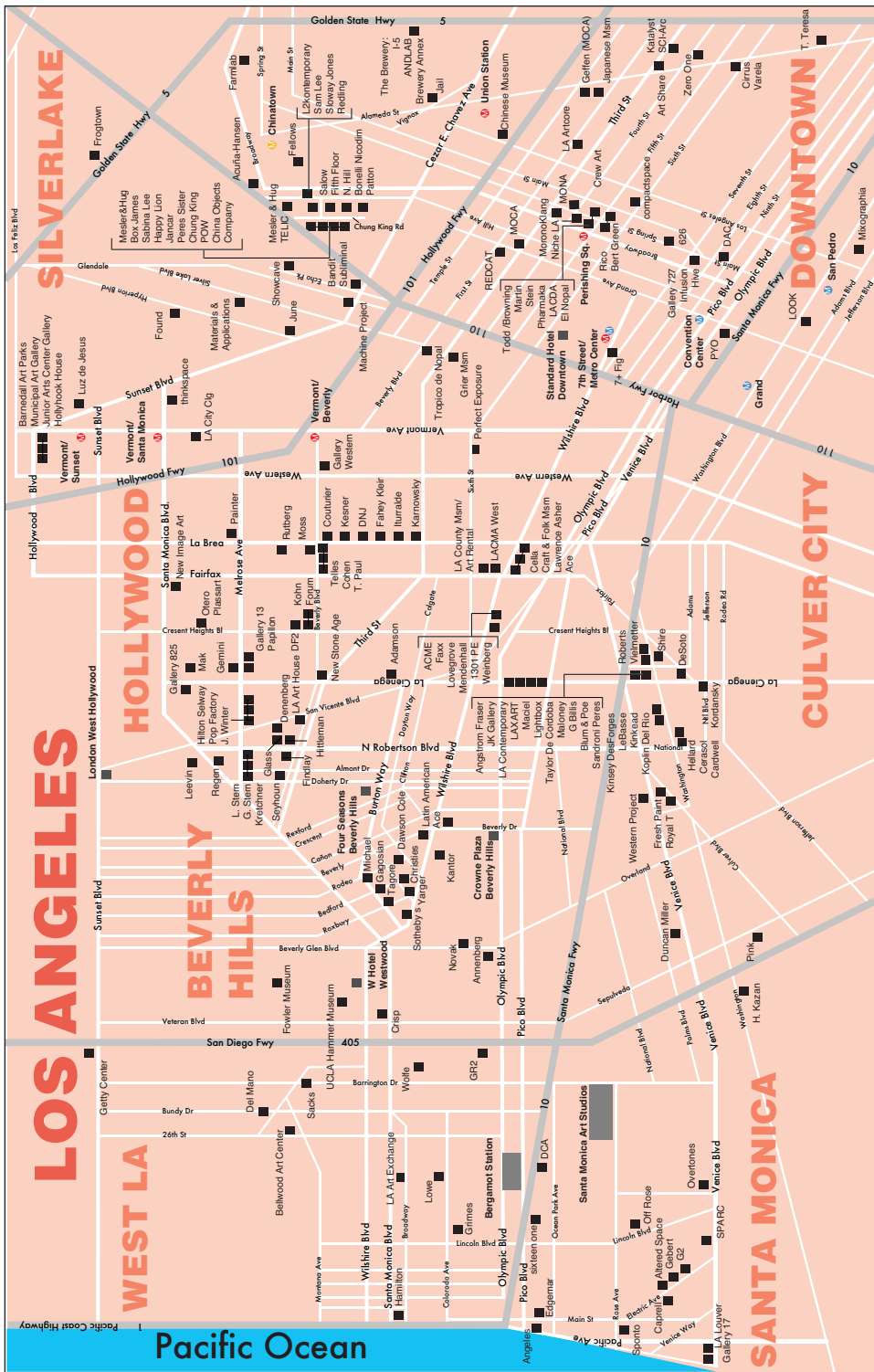


A charming European style boutique hotel.

Just off the Magnificent Mile & minutes from Navy Pier.

The Seneca

200 East Chestnut • Chicago
 1.800.800.6261
senecahotel.com



National - Los Angeles

ACE Gallery

John Millei: "Maritime", thru Feb; John Millei: "Woman in a Chair", thru Jan 20
 9430 Wilshire Blvd / 5514 Wilshire Blvd
 Beverly Hills / Los Angeles, CA 90212 323.935.4411
info@acegallery.net www.acegallery.net

Anderson Galleries

Barbizon, Academic, Impressionist and Post-Impressionist Paintings
 354 N. Bedford Dr, Beverly Hills CA 90210
 310.858.1644 info@andersongalleries.com
www.andersongalleries.com

Bamboo Lane Gallery

Please call gallery for schedule
 424 Bamboo Lane, Los Angeles CA 90012
 (213) 617-8137 info@bamboollane.com
www.bamboollane.com

George Billis Gallery

Carol Inez Charney, photography / prints, Jan 9 thru Feb 13
 2716 S. La Cienega Blvd, Los Angeles CA 90034
 310.838.3685 info@georgebillis.com
www.georgebillis.com

Blum & Poe Gallery

Sharon Lockheart: "Lunch Break", thru Jan 9; Lee Ufan, painting, Jan 16 thru Feb 20
 2727 S. La Cienega Blvd, Los Angeles CA 90034
 310.836.2062 info@blumandpoe.com
www.blumandpoe.com

Carmichael Gallery

Aakash Nihalani, Mark Jenkins, sculpture, works on paper, installation using tape, Jan 21 thru Feb 18
 1257 N. La Brea Ave, West Hollywood CA 90038
 323.969.0600 info@carmichaelgallery.com
www.carmichaelgallery.com Tue-Sun 1-7

The Company

"Alexander May", Installation, thru Jan 2; Elias Hansen, "Predicting the Present", Jan 9 thru Feb 14; Adam Janes, Jan 9 thru Feb 14
 946 Yale Street #39F, Los Angeles CA 90012
 213.221.7082 info@thecompanyart.com
www.thecompanyart.com Thu-Sun 12-6, by appt

Chung King Project

Dan Bayles, "New Paintings", extended thru Jan 23
 510 Bernard St, Los Angeles CA 90012
 213.625.1802 info@chungkingproject.com
www.chungkingproject.com

Hamilton-Selway

Wholesale dealers with primary specialization in works b by Warhol, Lichtenstein, Haring, Wesselmann, Longo
 8678 Melrose Ave, West Hollywood CA 90069
 310.657.1711 info@hamiltonselway.com
www.hamiltonselway.com

Honor Fraser

Gustavo Godoy, "Fast-Formal Object: Big White", sculpture
 Jan 16 thru February 20
 2622 S. La Cienega Blvd, Los Angeles CA 90034
 310.837.0191 info@honorfraser.com
www.honorfraser.com

Gagosian Beverly Hills

Aaron Young, "The Right Way to Do Wrong" Jan 15 thru Feb 27; Group Show, "Meet Me Inside", Jan 15 thru Feb 27
 456 N. Camden Dr, Beverly Hills CA 90210
 310.271.9400 info@gagosian.com
www.gagosian.com

Gemini G.E.L.

Joel Shapiro, thru Jan 8; Richard Tuttle, "Metal Shoes", 8 new intaglio prints, Jan 11 thru Feb 26
 8365 Melrose Ave, Los Angeles CA 90069
 323.651.0573 info@geminigel.com
www.geminigel.com

JK Gallery

Judith Mullen, painting, sculpture, Jan 16 thru Feb 20
 2632 S. La Cienega Blvd, Los Angeles CA 90034
 310.837.3330 info@jkgallery.net
www.jkgallery.net

Merry Karnowsky

Please call gallery for schedule
 170 S. La Brea Ave, Los Angeles CA 90036
 323.933.4408 info@mkgallery.com
www.mkgallery.com

Kinkead Contemporary

Jered Sprecher, painting, Jan 9 thru Feb 13
 6029 Washington Blvd, Culver City CA 90232
 310.838.7400 info@kinkeadcontemporary.com
www.kinkeadcontemporary.com

Koplin Del Rio Gallery

"Kenny Harris: New Paintings", Jan 9 thru Feb 20; "Shay Bredimus: New Drawings", Jan 9 thru Feb 20
 6031 Washington Blvd, Culver City CA 90232
 310.836.9055 info@kopлиндelrio.com
www.kopлиндelrio.com

David Kordansky Gallery

Rashid Johnson, "Other Aspects", thru Jan 16
 3143 S. La Cienega Blvd, Unit A, Los Angeles CA 90016
 323.222.1482 info@davidkordanskygallery.com
www.davidkordanskygallery.com

LA Contemporary

Chase, painting, Jan 9 thru Feb 13
 2634 S. La Cienega Blvd, Los Angeles CA 90034
 310.559.6200 info@lacontemporary.com
www.lacontemporary.com Tue-Sat 11-5

LAXART

Artemio, neon sculpture; Kamrooz Aram, painting, both open Jan 30 (see openings)
 2640 S. La Cienega, Los Angeles CA 90034
 310.559.0166 info@laxart.org
www.laxart.org

Sam Lee Gallery

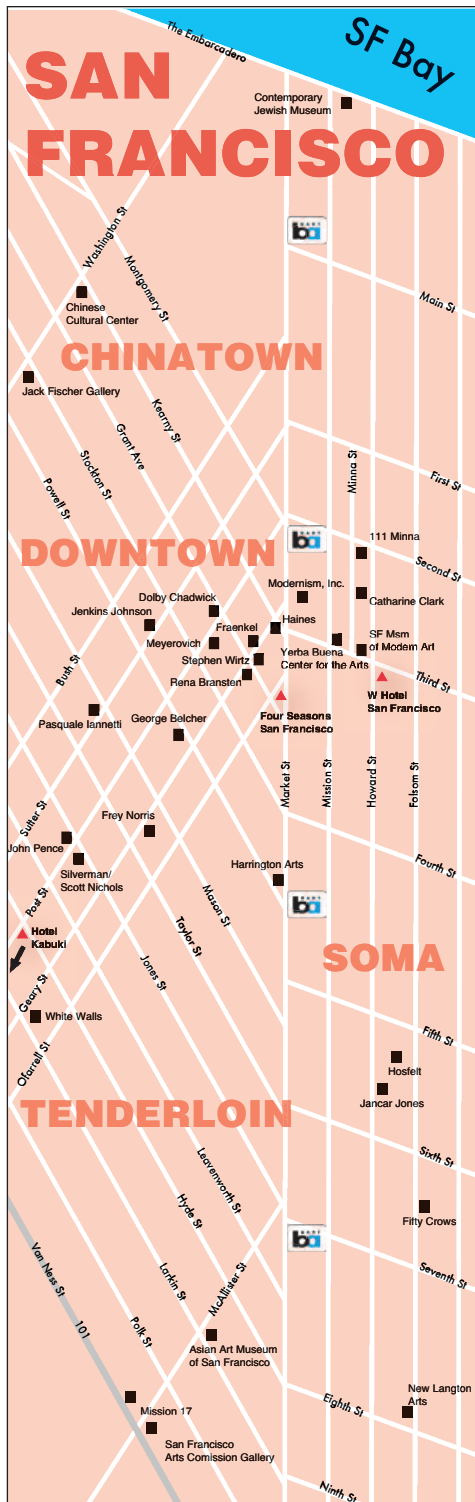
Jeff Gambill, "Barely There", painting, thru Jan 23
 990 N. Hill St, #190, Los Angeles CA 90012
 323.227.0275 info@samleegallery.com
www.samleegallery.com

GPS

gpsnyc.com

professional exhibition printing
& hi-res digital photo archiving

42 West 17th Street,
New York, NY 10011
212.242.7667



National - San Francisco

Asian Art Museum of San Francisco
"Photographic Memories", Photographs thru Jan 17
200 Larkin St, Civic Center, 94102
415.581.3500 pr@asianart.org
www.asianart.org Tue-Sun 10-5

Fraenkel Gallery
"Diane Arbus: Christ in a lobby and Other Unknown or Almost Known Works", selected by Robert Gober, Jan 7 thru Mar 6
49 Geary St, San Francisco CA 94108
415.981.2661 mail@fraenkelgallery.com
www.fraenkelgallery.com Tue-Fri 10:30-5:30, Sat 11-5

Hackett-Freedman Modern Gallery
20th century and contemporary painting and sculpture, with a focus on postwar American and Californian works
250 Sutter St, 94108
415.362.7152 www.realart.com
By Appointment Only

Haines Gallery / Haines Projects
"Mike Henderson: New Paintings", Jan 7 thru Feb 13
49 Geary St, 5th Fl, / 1661 Tennessee Street, 3Q 94108
415.397.8114 info@hainesgallery.com
www.hainesgallery.com By appointment only

Jack Hanley Gallery
Andy Coolquitt, light sculptures, Jan 15 thru Feb
395 Valencia St, 94103
415.522.1623 info@jackhanley.com
www.jackhanley.com Tue-Sat 11-6

Hosfelt Gallery
Arngunnur Yr, "Distant", painting, Dec 12 thru Jan 23;
Nelleke Beltjens, "Apparently", drawings, Dec 12 thru Jan 23
430 Clementina St, 94103
415.495.5454 infosf@hosfeltgallery.com
www.hosfeltgallery.com Tue-Sat 11-5:30

Jenkins Johnson Gallery
Group Show: "Winter Haiku", Dec 10 thru Jan 30 (double show, see Chelsea listings)
464 Sutter St, 94108
415.677.0770 sf@jenkinsjohnsongallery.com
www.jenkinsjohnsongallery.com Tue-Fri 10-6, Sat 10-5

George Krevsky Gallery
"From the Gallery Collection", American Art, Jan 4 thru Jan 31
77 Geary St., 94108
415.397.9748
www.georgekrevskygallery.com Tue-Sat 11-5:30

Modernism, Inc.
Please call gallery for schedule
685 Market St., 94105
415.541.0461 info@modernisminc.com
www.modernisminc.com Tue-Sat 10-5:30

John Pence Gallery
Group Show, "Eat, Drink and Be Merry", Jan 8 thru Feb 20
750 Post St., 94109
415.441.1138 art@johnpence.com
www.johnpence.com Mon-Fri 10-6, Sat 10-5

MESSINEO ART PROJECTS WYMAN CONTEMPORARY



"PERSPECTIVES"
contemporary color photography

Celeste Fichter
Jim Knight
Andrea Sanders

December 2 - January 23
Wed - Sat 12 - 5pm & by appointment

San Francisco Museum of Modern Art (SFMOMA)

"The Anniversary Show", Dec 19 thru Jan 16 2011; "Dispatches from the Archives", thru Jul 06; "Focus on Artists", thru May 23
151 Third St, 94103
415.357.4000 collections@sfmoma.org
www.sfmoma.org Mon-Tue 11-5:45, Thu 11-8:45, Fri-Sat 11-5:45

San Francisco Open Studios

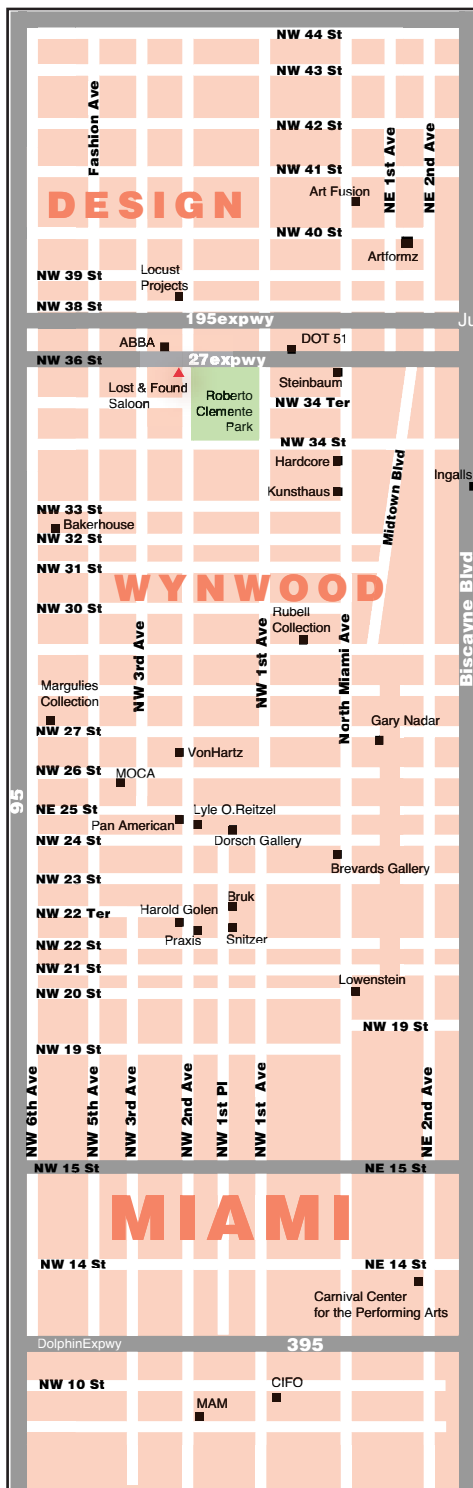
Please call for events and exhibitions.
934 Brannon St., 94103
415.861.9838 info@artspan.org
www.artspan.org Mon-Fri 9-5, by appt

Andrea Schwartz Gallery

Group show, thru Jan 27; Jamie Brunson and Catherine Dudley, opens Jan 27
525 2nd St, 94107
415.495.2090 info@asgalleries.com
www.asgalleries.com Mon-Fri 9-5, Sat 1-5

Yerba Buena Center for the Arts

"When Lives Become Form: Contemporary Brazilian Art, 1960s to the Present", thru Jan 31
701 Mission St., 94103
415.978.2787
comments@YBCA.org www.ybac.org
Thu-Fri 2-8, Sat 12-8, Sun 12-6, First Tue 12-8



National - Miami

Brevards Gallery

"Non-Duality", sculpture, thru March 2010
 2320 N Miami Ave, Miami, FL 33127
 305.576.5747 info@brevards.com
 www.brevards.com Tue-Sat 8am-11pm

Harold Golen Gallery

Pop Surrealist Gallery in Wynwood
 2294 NW 2nd Ave, Miami, FL 33127
 305.989.3359 harold@haroldgolengallery.com
 www.haroldgolengallery.com Sat 1-5, second Sat 7-11

Dorsch Gallery

Closed for renovations Jan, will reopen with regular hours in Feb
 151 NW 24 Street, 33127
 305.576.1278 info@ddorschgallery.com
 www.dorschgallery.com Tue-Sat 11-6

ABBA Fine Art

David McConnell, "Recent Works", Jan 9 thru Feb 11
 233 NW 36th Street, 33127
 305.576.4278 info@abbafineart.com
 www.abbafineart.com Tue-Fri 12-5, Sat by appt

Margulies Collection at the WAREHOUSE

An extensive collection of contemporary and vintage photography, video, sculpture and installation from the holdings of the prominent collector Martin Z. Margulies
 591 NW 27th Street, 33127
 305.576.1051 info@margulieswarehouse.com
 www.margulieswarehouse.com

Bass Museum

Kent Henriksen, "Wayward we Hunt", installation, thru Jan 10; Dzine, thru Feb 21; "Where do we go from Here? Selections from La Colección Jumex", Dec 3 thru Mar 14
 2121 Park Ave, Miami Beach, 33139
 305.673.7530 info@bassmuseum.org
 www.bassmuseum.org

Hardcore Art

Participating in MIA fair Jan 6 thru Jan 10; please call gallery for schedule
 3326 N Miami Ave, 33127
 305.576.1645 info@hardcoreartmiami.com
 www.hardcoreartmiami.com

Diana Lowenstein

Carlos Betancourt, "Lapidus Infinitus", digital montage and prints, Dec 1 thru Feb 5
 2043 N Miami Ave, 33127
 305.576.1804 info@dlfinearts.com
 www.dlfinearts.com Tue-Sat 10:30-6

Lyle O. Reitzel

José Bedia, "Ritual of Passage", painting, Dec 5 thru Jan 30
 2441 NW 2nd Ave, 33127
 305.573.1333 info@lyleoreitzel.com
 www.lyleoreitzel.com Wed-Fri 10-6, Sat 12-6

Bernice Steinbaum

Luis Valenzuela, "Sustainability with Style", Jan 9 thru Feb 6
 3550 N Miami Ave, 33127
 305.573.2700 info@bernicesteinbaumgallery.com
 www.bernicesteinbaumgallery.com Tue-Sat 10-6

Miami's Premiere
 Pop Surrealist Gallery
 2294 North West 2nd Avenue
 (Wynwood Art District)
 haroldgolengallery.com

305-989-3359

ART FAIRS Locations & Hours

MIAMI / Southeast

Miami International Art Fair
 Miami Beach Convention Center
 1901 Convention Center Dr, Miami Beach
 Thu Jan 7 thru Sun Jan 10
 Thu & Sun 12-8, Fri & Sat 12-9
 Preview Jan 6, 6-8

Art Palm Beach
 Palm Beach County Convention Center
 650 Okeechobee Boulevard
 West Palm Beach
 Fri Jan 15 thru Tue Jan 19
 Daily 12-7
 Preview Jan 14, 6-7:30

NEW YORK

Winter Antiques Fair
 Park Avenue Armory at Park & 67th
 Jan 22 thru Jan 31
 Daily 12-8, Sun & Thu 12-6
 Preview Jan 21



International - Shanghai

Contrasts Gallery

Bingyi: "Skin", Nov 22 thru Dec 22; Yi Zhou: "The Ear", video, thru Jan
181 Middle Jingxi Rd, Shanghai 20002
+86.21.6323.1989
www.contrastsgallery.com

MOCA Shanghai

Animamix Biennial Nov thru Feb
People's Park, 231 Nanjing West Road, Shanghai 200003
+86.21.6321.9900 info@shanghartgallery.com
www.mocashanghai.org Mon-Sun 10-6; Wed 10-10

1918 ArtSPACE Shanghai

Huang He: "A Struggle of Life and Death", painting, installation, thru Jan 23
No.78 Changping Rd, Jing'An District, Shanghai 200041
+86.21.5228.6776 info@1918artspace.com
www.1918artspace.com
No.78 Changping Rd, Jing'An District

Elisabeth de Brabant

Leng Hong: "Scented Seasons", painting, thru Jan
No. 299 Fuxing West Road near Huashan Road, 200031
+86-021-6466-7428 www.elisabethdebrabant.com
Tue-Fri 10-6:30; Sat, Sun 1:30 - 6:30 PM

M97 Gallery

Chen Wei Solo Exhibition, photography from 2007-2009, thru Jan 15
No. 97 Moganshan Rd. 2nd floor, 200060
+86-021-6266-1597 info@gallery97.com
www.m97gallery.com

ifa gallery

Winter group exhibition, thru Jan 24
621 Changde Road, (near Wuding Road), 200040
+862162560835 contact@ifa-gallery.com
www.ifa-gallery.com Tue-Sun 10-7; by appointment

International - Beijing

Pekin Fine Arts

Tsang Kin-Wah: "The Third Seal-They Are Already Old. They Don't Need To Exist Anymore", prints, thru 18 Jan
No. 241 Cao Chang Di Village, Cui Ge Zhuang, Chaoyang District, Beijing 100105
+8610.5127.3220
www.pekinfinearts.com Wed-Sun 10-6

Chambers Fine Art- Beijing

Christmas Show, by appt thru Jan
Red No. 1-D, Cao Chang Di Village, Chaoyang District, Beijing 100015
+8610.5127.3298 bj@chambersfineart.com
www.chambersfineart.com Tue-Sun 10-6

Red Gate Gallery

"Head On", curated by Brian Wallace, Dec 19 thru Feb 28
Levels 1 & 4, Dongbianmen Watchtower
Chongwenmen, Beijing 100600
+8610.6525.1005
www.redgategallery.com Sun-Sat 10-5

Auctions

Christie's

20 Rockefeller Plaza, 5th fl, New York, NY 10020
T 212.636.2000 F 212.636.4928
www.christies.com

Doyle New York

175 E 87, New York, NY 10128
T 212.427.2730 F 212.369.0892
www.doylenewyork.com

Phillips de Pury & Co.

450 W 15, New York, NY 10011
T 212.940.1200 www.phillipsdeputy.com

Sotheby's

1334 York Ave, New York, NY 10021
T 212.606.2000 F 212.606.7833
www.sothebys.com

Leslie Hindman Auctioneers

1338 West Lake St, Chicago, IL 60607
T 312.280.1212
www.lesliehindman.com

Bonhams & Butterfields San Francisco

220 San Bruno Ave, San Francisco, CA 94103
T 415 861 7500 F 415 861 8951
www.bonhams.com



"This is the most comprehensive and thorough guide to galleries I have ever come across.



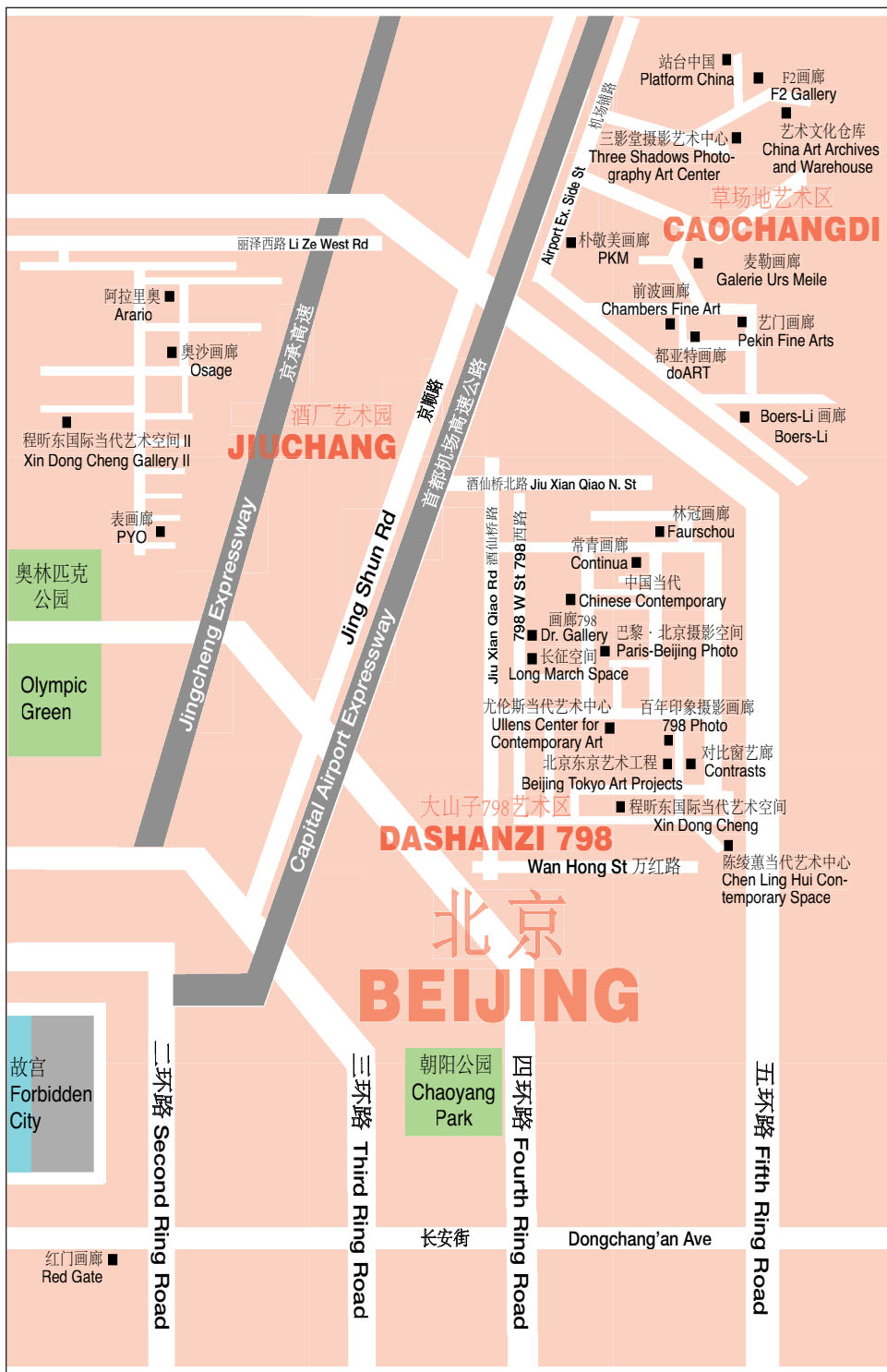
It's all you'll ever need if you are interested in discovering great art in New York."

Ken Johnson
The New York Times



subscribe
theMmag.com





Openings

January	5	Tuesday	January	9	Saturday
Soho			Miami		
Soho Photo Gallery / M. Zgirdea, V. Kretchmer, P. Parlapano 6-8			Bernice Steinbaum / Luis Valenzuela 7-10		
Midtown			January	11	Monday
Jadite Galleries / Ellen Fisch 6-8			Los Angeles		
Jadite Galleries / Cepp Selgas 6-8			Gemini G.E.L. / Richard Tuttle 6-8		
January	6	Wednesday	January	14	Thursday
Chelsea			LES / Village		
Robert Miller / Patti Smith and Steven Sebring 6-8			Lehmann Maupin / Christian Helmich 6-8		
January	7	Thursday	Chelsea		
Chelsea			Agora Gallery / Three Group Shows 6-8		
Blue Mountain / Victoria Salzman 6-8			Robert Mann / Michael Kenna 6-8		
Cheim and Reed / Diane Arbus, William Eggleston 6-8			Mike Weiss / Stefanie Gutheil 6-8		
George Billis / Group Show 6-8			Ricco Maresca / William Hawkins 6-8		
Kathryn Markel / Julian Jackson 6-8			STUX / Group Show 6-8		
McKenzie Fine Art / Group Show 6-8			Midtown		
Mixed Greens / Howard Fonda 6-8			Fortain Gallery / ASYLUM: The Artists of the Living Museum 6-8		
Cynthia Reeves / Anne Lindberg and Johnny Swing 6-8			January	15	Friday
Soho20 Chelsea / Joyce Harris / Mayer 6-8			Los Angeles		
Andre Zarre / Bruce Checefsky 6-8			Gagosian / Aaron Young, Group Show 6-8		
Midtown			San Francisco		
Howard Greenberg / Homer Page 6-7:30			Jack Hanley / Andy Coolquitt 6-8		
Howard Greenberg / Keith F. Davis lecture 7:30			January	16	Saturday
New Art Center / Group Show 6-8			LES / Village		
LIC / Queens			Woodward / Group Show 6-8		
M55 / Enid Sanford 6-8			Brooklyn		
Los Angeles			Williamsburg Art & Historical Center / Annual WAH salon 4-6		
Fraenkel Gallery / Diane Arbus 5-8			Los Angeles		
San Francisco			Blum & Poe / Lee Ufan 6-8		
Haines Gallery / Mike Henderson 5:30-7:30			Honor Fraser / Gustavo Godoy 6-8		
January	8	Friday	JK Gallery / Judith Mullen 6-8		
Soho			January	19	Tuesday
Jack Hanley Gallery / Maria Lorenz 6-9			Uptown		
Brooklyn			National Academy Museum / New York Ceramics Fair 5-9		
Pierogi / Tony Fitzpatrick, Chan Kok Hooi 7-9			January	20	Wednesday
Chicago			Uptown		
Zg Gallery / Gregory Jacobsen 5:30-7:30			Gemini G.E.L. at Joni Weyl / Richard Tuttle 6-8		
Roy Boyd / John Fraser 6-9			January	21	Thursday
Dubhe Carreño / Anne Drew Potter 6-9			Midtown		
January	9	Saturday	Forum Gallery / Bernardo Siciliano 6-8		
Soho			Los Angeles		
Ronald Feldman / Group Show 6-8			Carmichael / Aakash Nihalani, Mark Jenkins 7-10		
Midtown			January	22	Friday
Michael Rosenfeld / Charles Seliger 6-8			Brooklyn		
LIC / Queens			Art 101 / Chester Nielsen 7-9		
climate / gallery / International and national 100+ artists 6-9			January	28	Thursday
Los Angeles			San Francisco		
George Billis / Carol Inez Charney 5-8			Andrea Schwartz / Jamie Brunson & Catherine Dudley 6-8		
Kinkead Contemporary / Jared Sprecher 6-8			January	29	Friday
The Company / Elias Hansen, Adam Janes 6-8			LES		
Koplin Del Rio / Kenny Harris, Shay Bredimus 6-8			BLT / Herb Brown 6-9		
LA Contemporary / Chase 5-8			January	30	Saturday
San Francisco			Los Angeles		
John Pence / Group Show: Eat, Drink and Be Merry 6-8			LAXART / Artimio, Kamrooz Aram 7-9		

1918 ArtSPACE Shanghai 61
532 Gallery / Thomas Jaeckel 37

A
ABBA Fine Art 59
ACA Galleries 37
ACE Gallery - Beverly Hills 55
Agora Gallery 37
Brooke Alexander 36
Americas Society 48
Anderson Galleries 55
Andrea Schwartz 57
Art 101 50
Asia Society 44
Asian Art Museum of San Francisco 57

B
Bamboo Lane Gallery 55
Barry Friedman Ltd. 37
Bass Museum 38, 59
Nathan A. Bernstein & Co., Ltd. 48
Björn Ressel Gallery 48
BLT Gallery 35
Blue Mountain Gallery 37
Blum & Poe 55
The Boiler 50
Bonhams & Butterfields San Francisco 61
Roy Boyd 53
Breverds Gallery 59
Brooklyn Museum of Art 50

C
J. Cacciola Gallery 37
Carmichael Gallery 55
Causey Contemporary 50
Chambers Fine Art 37
Chambers Fine Art-Beijing 11
Cheim & Read 37
Chelsea Art Museum 37
China Institute 48
China Square 35
Christie's 61
Chung King Project 55
Ethan Cohen Fine Arts 36
Contrasts Gallery 61
Melanie Cooper 53
CSV 35
Betty Cunningham Gallery 41

D
David Kordansky 55
DC Moore Gallery 44
Dean Project 51
Deitch Projects 36, 51
Dickinson Roundell Inc. 48
Dorsch Gallery 59
Doyle New York 61
The Drawing Center 36
Dubhe Carreño 53

E
Andrew Edlin Gallery 41
Elisabeth de Brabant 61

F
Feature Inc 35
Ronald Feldman Fine Arts 36
First Street Gallery 41
Forum Gallery 44
Fountain Gallery 44
Fraenkel Gallery 57
The Frick Collection 48
Front Room Gallery 50

G
Gallery Korea 44
The Gabarron Foundation, Carriage House Center for the Arts 44
Gagosian Gallery 41, 48, 55
Galerie St. Etienne 44

Gana Art New York 41
HP Garcia Gallery 44
Gemini G.E.L. 55
Gemini G.E.L. at Joni Moisant Weyl 48
George Billis 55
George Billis Gallery 41
George Krevsky 57
Gladstone Gallery 41
Goedhuis Contemporary 48
Harold Golen Gallery 59
Richard Gray 53
Richard Gray Gallery 49
Howard Greenberg 46
Guggenheim Museum 49

H
Hackett-Freedman Modern Gallery 57
Nahra Haime Gallery 46
Haines Gallery 57
Hamilton-Selway 55
Carl Hammer 53
Hardcore Art 59
High Line Gallery 41
Hirschl & Adler 49
Irena Hochman Fine Art Ltd 49
Bill Hodges Gallery 46
Honor Fraser 55

I
ifa gallery 61
International Center of Photography 46

J
Jack Hanley Gallery 57
Jadite Galleries 46
Jenkins Johnson 41, 57
The Jewish Museum 49
JK Gallery 55
Jo-An Fine Art Gallery 49
John Pence Gallery 57
Juvenal Reis Studios 51

K
Merry Karnowsky 55
Jim Kempner Fine Art 41
Kent Gallery 41
Kentler International Drawing 50
Anton Kern Gallery 41
Kinkead Contemporary 55
Kips Gallery 41
Knoedler & Co. 49
Koplin Del Rio 55
Hans P. Kraus, Jr. Fine Photographs 49

L
Lehmann Maupin 35
LA Contemporary 55
LAXART 55
Lehmann Maupin Gallery 41
Leonard Hutton Galleries 46
Leslie Hindman Auctioneers 61
Lincoln Center Gallery 49
Diana Lowenstein 59
LTMH 49

M
M55 Art 51
M97 Gallery 61
Robert Mann Gallery 42
Marguiles Collection 59
Kathryn Markel Fine Arts 42
Marlborough 46
Matthew Marks Gallery 42
McKenzie Fine Art 42
Messineo Art Projects 42
Metro Pictures Gallery 42
Metropolitan Museum of Art 49
Robert Miller Gallery 42

Mixed Greens 42
MOCA Shanghai 61
Modernism, Inc. 57
MoMa 46
Galerie Mourlat 49
El Museo Del Barrio 49
The Museum at FIT 42
Museum of Contemporary Art Chicago 53

N
NY Studio Gallery 35
The National Academy Museum 49
Neue Galerie New York 49
New Art Center 46
The New Museum 35
Richard Norton 53

O
OK Harris Works of Art 36

P
P.S.1 Contemporary Art Center 51
Parker's Box 50
Pekin Fine Arts 61
The Pen and Brush, Inc. 35
The Phatory llc 35
Phillips de Pury & Co 61
Pierogi 50

Q
QCC Art Gallery 51

R
Red Gate Gallery 61
Reeves Contemporary 42
Daniel Reich Gallery 42
Lyle O. Reitzel 59
Rico / Maresca 42
Andrea Rosen 42
Michael Rosenfeld Gallery 46
Michelle Rosenfeld 49

S
Soho20 Chelsea 44
Sam Lee Gallery 55
San Francisco Open Studios 57
Carries Secrist 53
SF MOMA 57
Jack Shainman Gallery 42
The Anita Shapolsky Gallery 49
Allen Sheppard Gallery 42
Socrates Sculpture Park 51
Soho Photo Gallery 36
Sotheby's 61
Staley-Wise Gallery 36
Robert Steele Gallery 44
Bernice Steinbaum 59
Maya Stendhal Gallery 44
Allan Stone 49
Stricoff 44
Studio 601 44
Stefan Stux Gallery 44

T
The Company 55
The Space L.L.C. 51
Paul Thiebaud Gallery 50
Erik Thomsen LLC Asian Art 50
Throckmorton Fine Art, Inc. 46

U
Ubu 50
Umbrella Arts - Bodell Fahey 35

V
Von Lintel Gallery 44

W
WAH 50
Ward Nasse Gallery 36
Mike Weiss Gallery 44
Whitney Museum 50
Wildenstein & Co. Inc. 50
Woodward Gallery 36

Wyman Contemporary 44

Y
Yerba Buena Center 57

Z
Zabriskie Gallery 46
Andre Zarre Gallery 44
Zg Gallery 53
Zürcher Studio 36

The Catalina
HOTEL & BEACH CLUB
SOUTH BEACH
1732 COLLINS AVENUE SOUTH BEACH, FLORIDA 33139 catalinahotel.com 305.674.1160

ANOTHER LIEBERMAN PRODUCTION
southbeachgroup.com

WHITELAW CHELSEA CHESTERFIELD MERCURY SHELLY LILY-LEON

THROCKMORTON FINE ART



TINA, Under the Mexican Sky

December 17th - March 6th, 2010

Book Available: TINA, UNDER THE MEXICAN SKY, \$45.00

Tina Modotti, Julio Antonio Mella, Gelatin silver print, 1928

145 East 57th Street, 3rd Floor
New York, NY 10022

tel 212. 223. 1059 fax 212. 223. 1937

www.throckmorton-nyc.com info@throckmorton-nyc.com